

For Residential and Commercial Applications

Job Name		Engineer / Architect	
Job Location		Wholesaler	
Submittal Date		Contractor	

WB034/134/234 7/8" OD Copper Water Heater Connectors

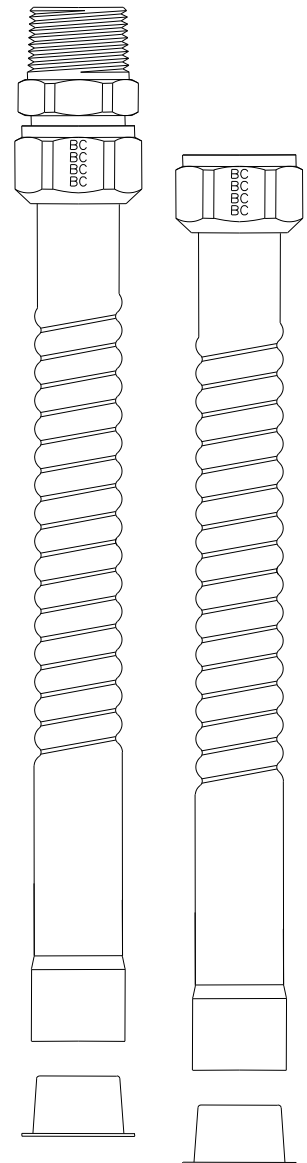
Use: For use in exposed locations only to connect water heaters and other water connected devices to the water supply

Design Features:

- **Galvanic corrosion resistance.** Internal dielectric sleeve effectively isolates dissimilar metals within the waterway to prevent galvanic corrosion
- **No additional dielectric union needed** with installation. Dielectric is built-in to the design of the connector
- **Nut provides a full thread engagement** resulting in a secure connection
-

Operating Specifications:

Temperature: 40° to 180° F (NSF61 maximum 82° C)
Pressure: water pressures up to 125 PSI maximum



Product Submittal Form

CONNECTOR MATERIAL SPECIFICATIONS

Tubing	Copper
Dielectric Sleeve	Polypropylene
Nuts	C36000 brass
End Fittings	C36000 brass
Washers	Nitrile rubber

Part Listing:

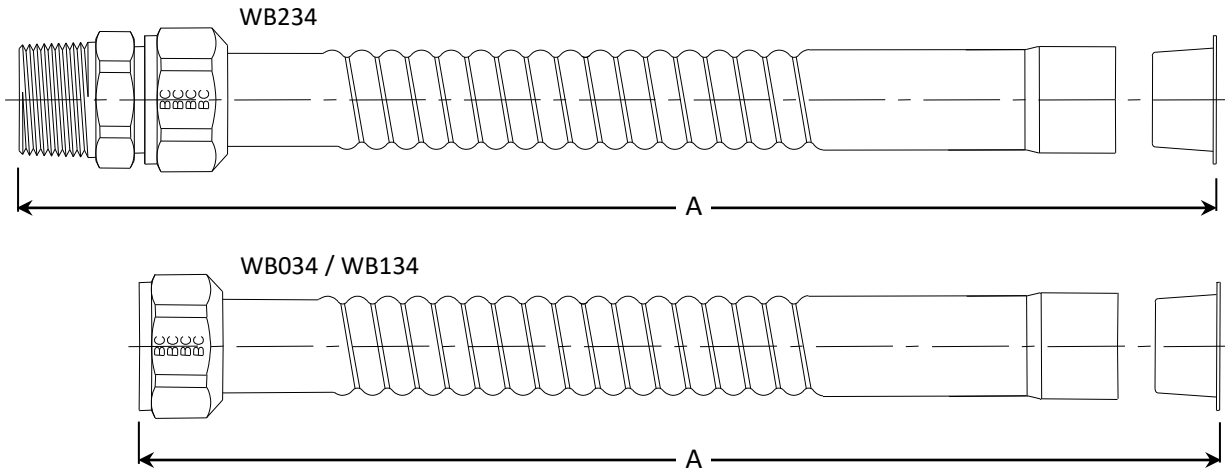
- WB034-12N 7/8" OD X 12" connector with 3/4" FIP fitting x 3/4" nom male/female Sweat (7/8" ID)
- WB034-15N 7/8" OD X 15" connector with 3/4" FIP fitting x 3/4" nom male/female Sweat (7/8" ID)
- WB034-18N 7/8" OD X 18" connector with 3/4" FIP fitting x 3/4" nom male/female Sweat (7/8" ID)
- WB034-24N 7/8" OD X 24" connector with 3/4" FIP fitting x 3/4" nom male/female Sweat (7/8" ID)
- WB134-18N 7/8" OD X 18" connector with 1" FIP fitting x 3/4" nom male/female sweat (7/8" ID)
- WB134-24N 7/8" OD X 24" connector with 1" FIP fitting x 3/4" nom male/female sweat (7/8" ID)

This specification and all information contained herein is the confidential and exclusive property of Brasscraft Manufacturing Company and shall not be disclosed to others without the written consent of Brasscraft Mfg. Co. This specification must be returned to Brasscraft Mfg. Co. if requested.

WB034/134/234 7/8" OD Copper Water Heater Connectors

Part Listing:

- WB234-12N 7/8" OD X 12" connector with 3/4" MIP/FIP fitting x 3/4" nom male/female sweat (7/8" ID)
- WB234-15N 7/8" OD X 15" connector with 3/4" MIP/FIP fitting x 3/4" nom male/female sweat (7/8" ID)
- WB234-18N 7/8" OD X 18" connector with 3/4" MIP/FIP fitting x 3/4" nom male/female sweat (7/8" ID)
- WB234-24N 7/8" OD X 24" connector with 3/4" MIP/FIP fitting x 3/4" nom male/female sweat (7/8" ID)



PART DIMENSIONS (Inches)					
Connector Length (±.31)					
Model	Dim.	12"	15"	18"	24"
WB034	A	12.31	15.31	18.31	24.31
WB134	A	-----	-----	18.31	24.31
WB234	A	13.05	16.05	19.05	25.05

Listings & Certifications:

- IAPMO listed to ASME A112.18.6 / CSA B125.6



This specification and all information contained herein is the confidential and exclusive property of Brasscraft Manufacturing Company and shall not be disclosed to others without the written consent of Brasscraft Mfg. Co. This specification must be returned to Brasscraft Mfg. Co. if requested.