

Halogen



Our halogen 24V bus and truck lighting is used by major truck manufacturers

24V Truck lighting

For maximum **safety**, **comfort** and **value**, discover our 24V MasterDuty and MasterLife, now offering **ultimate lifetime** and improved **vibration resistance**. These original equipment quality lighting solutions offer **maximum performance** and minimum downtime.

www.philips.com/automotive

Which **24V** Halogen bulb do you **need**?



Built to last



Best-in-class lifetime



Maximum xenon effect



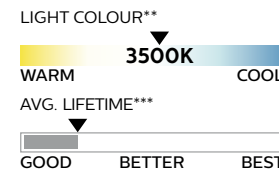
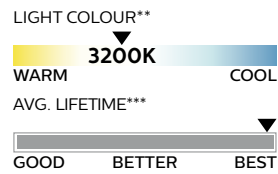
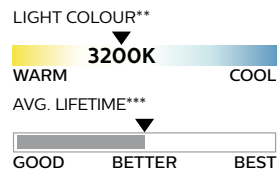
Standard



MasterLife



MasterDuty BlueVision



Available in H1, H3, H4, H7

Available in H1, H3, H4, H7, H11

Available in H4, H7

Images for illustration purposes only

** All kelvin figures quoted are up to and including the figure. Kelvin numbers may vary depending on bulb type

*** Lifetime varies & differs per type and per vehicle.

24V truck lighting

Halogen

Durability

MasterLife Best-in-class lifetime

- Lasts up to **1 200 hours***
- **Maximum vibration resistance***
- **Extra robust double-coil filament**
- **Signalling options also available.**
- **UV-blocking quartz glass**

Philips MasterLife lasts up to **1 200 hours*** while withstanding extreme **stress** and **vibration**. With a **minimum failure rate** our bulbs keep your fleet productive and on the move by minimising time-consuming interruptions. **MasterLife is the smartest choice for large fleet owners!**

*Lifetime differs per vehicle per bulb, indication is for H7 only.



Type	Part No.
H1	13258ML
H3	13336ML
H4	13342ML
H7	13972ML
H11	24362ML
PY21W	13496ML
R5W	13821ML
T4W	13929ML

Durability

24V Standard

Built to last

- **Longer life for greater reliability**
- **Vibration resistant**
- **Trusted OE quality**
- **UV-blocking quartz glass**
- **Comprehensive signalling range available**



Type	Part No.
C5W	13844
Fest T10,5x38	13854
Fest T10,5x43 10W	13866
Fest T10,5x43 5W	13864
Fest T6,2x27	13818
H1	13258B1
H1	13258
H3	13336
H4	13342B1
H4 - P45t-41	13555
H4 - 43t-38	13342
H7	13972
H7	13972B1
P21/5W	13499
P21W	13498

Type	Part No.
R10W	13814
R5W - BA15d	13822
RSW - BA15s	13821
T2W	13913
T3W	13910
T4W	13929
W1.2W	13516
W3W	13256
BAX	24029
BAX8.3S	13597
BAX10d	13598
H21W	24356
R2	13620
W2.5W	13960
W5W	13961

Images for illustration purposes only

24V EssentialPower

Original quality

- High wattage for better vision
- Vibration resistant
- UV-blocking quartz glass
- For off road use only, not approved for ADR, ECE or DOT.



Type	Part No.
H3	13628
H4	24568
H4fit	24569

24V Style MasterDuty BlueVision

Maximum xenon effect

- Maximum vibration resistance
- UV-blocking quartz glass
- ECE Approved and road legal
- Up to 3700K colour temperature*

*All kelvin figures quoted are up to and including the figure. Kelvin numbers may vary depending on bulb type

For drivers seeking **ultimate style** and **performance**, MasterDuty BlueVision produces a **blue xenon effect**.

Philips MasterDuty BlueVision combines **durability** and **vibration resistance** with an additional blue xenon effect for maximum style.



Standard



MasterDuty BlueVision



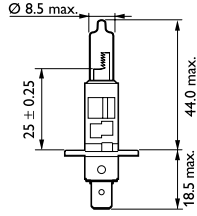
Type	Part No.
H4	13342MDBVB1
H7	13972MDBVB1
H7	13972MDBVS2

24V truck lighting

Halogen

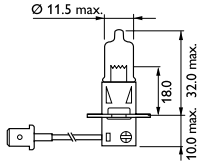
Images for illustration purposes only

24V Halogen Range Index



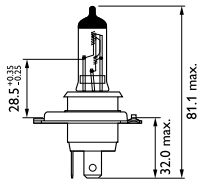
H1

Range	Part No.	Volts	Watts	Base	Kelvin*	Pack	QTY
Standard	13258B1	24V	70W	P14.5s	3200K	Blister	1
	13258	24V	70W	P14.5s	3200K	Box	1
MasterLife	13258ML	24V	70W	P14.5s	3200K	Box	1



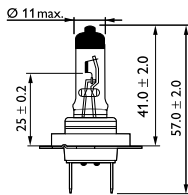
H3

Range	Part No.	Volts	Watts	Base	Kelvin*	Pack	QTY
Standard	13336	24V	70W	PK22s	3200K	Box	1
MasterLife	13336ML	24V	70W	PK22s	3200K	Box	1
Essential Power	13628	24V	100W	PK22s	3000K	Box	1



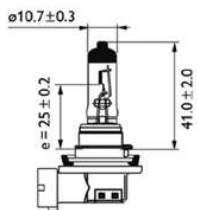
H4

Range	Part No.	Volts	Watts	Base	Kelvin*	Pack	QTY
Standard	13342	24V	75/70W	P43t-38	3200K	Box	1
	13342B1	24V	75/70W	P43t-38	3200K	Blister	1
	13342TP	24V	75/70W	P43t-38	3200K	Box	1
	13555	24V	75/70W	P45t-41	3200K	Box	1
	13555TP	24V	75/70W	P45t-41	3200K	Box	40
MasterLife	13342ML	24V	75/70W	P43t-38	3200K	Box	1
Essential Power	24568	24V	100/90W	P45t-41	3000K	Box	1
	24569	24V	100/90W	P43t-38	3000K	Box	1
MasterDuty BlueVision	13342MDBV1	24V	75/70W	P43t-38	3500K	Blister	1



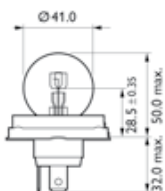
H7

Range	Part No.	Volts	Watts	Base	Kelvin*	Pack	Qty
Standard	13972	24V	70W	PX26d	3200K	Box	1
	13972B1	24V	70W	PX26d	3200K	Blister	1
MasterLife	13972ML	24V	70W	PX26d	3200K	Box	1
MasterDuty BlueVision	13972MDBVS2	24V	70W	PX26d	3500K	Twin	2
	13972MDBV1	24V	70W	PX26d	3500K	Blister	1



H11

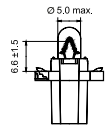
Range	Part No.	Volts	Watts	Base	Kelvin*	Pack	QTY
MasterLife	24362ML	24V	70W	PGJ19-2	3200K	Box	1



R2

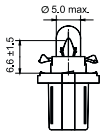
Range	Part No.	Volts	Watts	Base	Kelvin*	Pack	Qty
Standard	13620	24V	55/50W	P45t-41	3200K	Box	1

24V Signalling Range Index



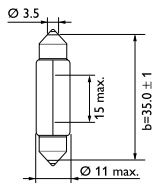
BAX8.3s

Range	Part No.	Volts	Watts	Base	Pack	Qty
Standard	13597	24V	1.2W	BAX8.3s/1.35 Grey	Box	10



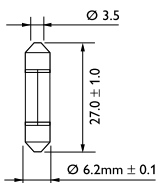
BAX8.5d

Range	Part No.	Volts	Watts	Base	Pack	Qty
Standard	24029	24V	1.2W	BAX8.5d/2 Yellow	Box	10
	13598	24V	1.2W	BAX8.5d/2 Grey	Box	10



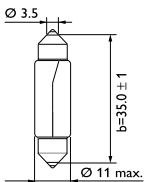
C5W

Range	Part No.	Volts	Watts	Base	Pack	Qty
Standard	13844	24V	5W	SV8.5	Box	10



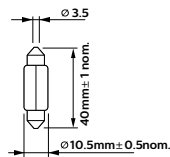
FEST T6,2x27

Range	Part No.	Volts	Watts	Base	Pack	Qty
Standard	13818	24V	3W	SV6	Box	10



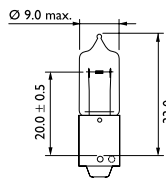
FEST T10,5x38

Range	Part No.	Volts	Watts	Base	Pack	Qty
Standard	13854	24V	10W	SV8.5	Box	10



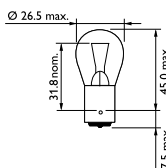
FEST T10,5x43

Range	Part No.	Volts	Watts	Base	Pack	Qty
Standard	13866	24V	10W	SV8.5	Box	10
	13864	24V	5W	SV8.5	Box	10



H21W

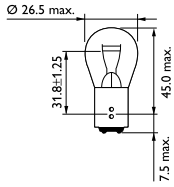
Range	Part No.	Volts	Watts	Base	Pack	Qty
Standard	24356	24V	21W	BAY9s	Box	10



P21W

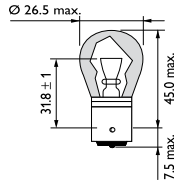
Range	Part No.	Volts	Watts	Base	Pack	Qty
Standard	13498	24V	21W	BA15s	Box	10
	13498TP	24V	21W	BA15s	Box	40

24V Signalling Range Index



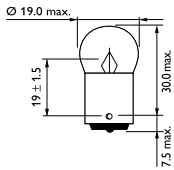
P21/5W

Range	Part No.	Volts	Watts	Base	Pack	Qty
Standard	13499	24V	21/5W	BAY15d	Box	10
	13499TP	24V	21/5W	BAY15d	Box	40



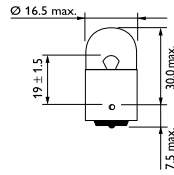
PY21W

Range	Part No.	Volts	Watts	Base	Pack	Qty
MasterLife	13496ML	24V	21W	BAU15s	Box	10



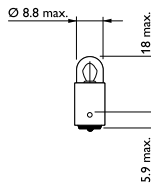
R5W

Range	Part No.	Volts	Watts	Base	Pack	Qty
Standard	13822	24V	5W	BA15d	Box	10
	13821	24V	5W	BA15s	Box	10
MasterLife	13821ML	24V	5W	BA15s	Box	10



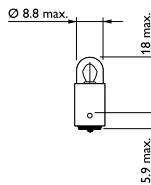
R10W

Range	Part No.	Volts	Watts	Base	Pack	Qty
Standard	13814	24V	10W	BA15s	Box	10



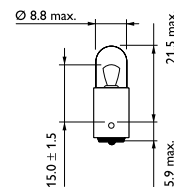
T2W

Range	Part No.	Volts	Watts	Base	Pack	Qty
Standard	13913	24V	2W	BA9s	Box	10



T3W

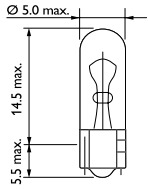
Range	Part No.	Volts	Watts	Base	Pack	Qty
Standard	13910	24V	3W	BA9s	Box	10



T4W

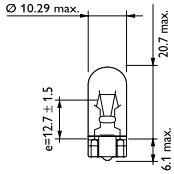
Range	Part No.	Volts	Watts	Base	Pack	Qty
Standard	13929	24V	4W	BA9s	Box	10
MasterLife	13929ML	24V	4W	BA9s	Box	10

24V Signalling Range Index



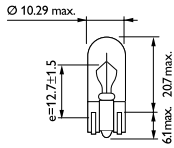
W1.2W

Range	Part No.	Volts	Watts	Base	Pack	Qty
Standard	13516	24V	1.2W	W2x4.6d	Box	10



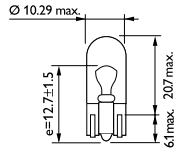
W2.5W

Range	Part No.	Volts	Watts	Base	Pack	Qty
Standard	13960	24V	2.5W	W2.1x9.5d	Box	10



W3W

Range	Part No.	Volts	Watts	Base	Pack	Qty
Standard	13256	24V	3W	W2.1x9.5d	Box	10



W5W

Range	Part No.	Volts	Watts	Base	Pack	Qty
Standard	13961	24V	5W	W2.1x9.5d	Box	10



24V truck lighting

Signalling

Which **bulb** for which **function**



MasterLife



24V Standard



24V EssentialPower



MasterDuty BlueVision



13258 13336 13342 13972 24362 13620

H1 H3 H4 H7 H11 R2 D1S/R D2S D2R



13258 13336 13342 13972 24362

H1 H3 H4 H7 H11

Low beam - high beam



13961 13844 13821

W5W C5W R5W

Front fog lights



13256 13961 13516-13521-13974

W3W W5W WBT5 BAX

Interior lights



13498 13496 24356

P21W PY21W H21W

Dashboard lights



13256 13961 13821 13929

W3W W5W R5W T4W

Front indicators

Front parking lights



13821 13814 13594 13499

R5W R10W P21/4W P21/5W

Rear parking lights



13961 13821 13814 24356

W5W R5W R10W H21W

Side indicators



13821 13814 13844 13961

R5W R10W C5W W5W

License plate lights



13498 13496 24356

P21W PY21W H21W

Rear indicators



13256 13961 13844 13821 13814 13929

W3W W5W C5W R5W R10W T4W

Running lights



13498 13499 24356

P21W P21/5W H21W

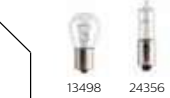
Stop lights



13498 24356 13445 13401

P21W H21W P25 P22

Rear fog lights



13498 24356

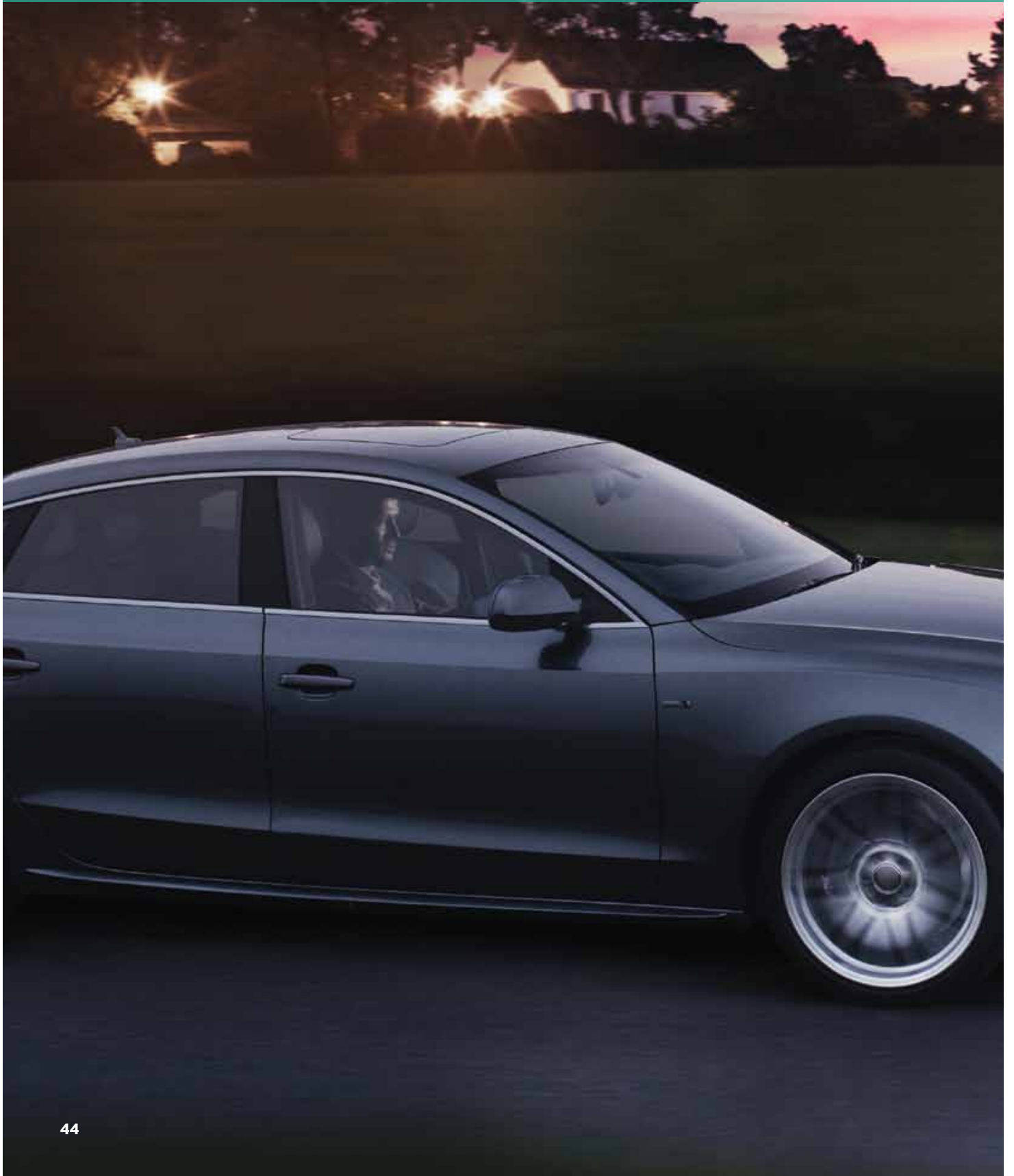
P21W H21W

Reversing light





Xenon





Our xenon car lighting is the choice of major car manufacturers

Xenon

solutions for cars and trucks

Discover our full range of xenon lighting solutions. The number one choice in xenon lighting, now with our **3 year warranty!**

www.philips.com/automotive



Which **xenon** bulb do you **need**?



Experience more light

Original quality



3 years warranty

Standard



Xenon Standard



Beam performance



LIGHT COLOUR**



Available in D1S, D2S, D2R, D3S, D4S, D4R, D5S

Up to **150%** more vision*



3 years warranty

Xenon X-tremeVision gen2



Standard



Xenon X-tremeVision gen2

Beam performance*



LIGHT COLOUR**



Available in D1S, D2S, D2R, D3S, D4S

Enjoy your passion

Homogeneous white
LED effect



3 years warranty

Xenon WhiteVision gen2



Standard



Xenon WhiteVision gen2

Beam performance*



LIGHT COLOUR**



Available in D1S, D2S, D2R, D3S

Images for illustration purposes only
 * Compared to the minimum legal standard (except for D2R that provides up to 20% more vision).
 ** All kelvin figures quoted are up to and including the figure. Kelvin numbers may vary depending on bulb type

Experience more light

Xenon Standard

Ideal for replacement

- **Single-bulb replacement technology:** new bulb matches colour temperature of the unchanged one
- **Economical choice**
- **Homologated 4300K**
- **UV-blocking quartz glass**
- **3 year warranty**

Philips Xenon Standard allows you to replace a single bulb while **matching** the **colour** of the unchanged one.

The Xenon innovative replacement technology is the ideal economical solution for a **single-bulb replacement**.

Available in C1 packaging



Available in



D1S



D2S



D2R



D3S



D4S



D4R



D5S



D1 Ballast



Standard



Xenon Standard



Type	Part No.
D1 Ballast	85988X2
D1S	85415P
D2R	85126P
D2S	85122P
D3S	42403
D4R	42406
D4S	42402
D5S	12410

Images for illustration purposes only

Experience more light

Xenon X-tremeVision gen2

Our brightest xenon bulb

- Up to 150% more vision*
- UV-blocking quartz glass
- 3 year warranty
- Maximum safety and visibility
- ECE approved and road legal

X-tremeVision gen2 is the latest development in **Xenon technology**. It offers the **most powerful** beam with light emission pushed to the limit. This means outstanding light performance with a unique light setting for **optimal driving comfort**.

www.philips.com/xenongen2

*Compared to the minimum legal standard (except for D2R that provides up to 20% more vision).

Available in S1 & SF packaging



Available in



D1S



D2S



D2R



D3S

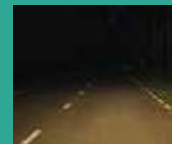


D4S

Dummy Retail Packs

Type	Part No.
D1S	85415XV2
D2S	85122XV2
D2R	85126XV2
D3S	42403XV2
D4S	42402XV2

Type	Part No.
D1S	56643SF
D2S	56644SF
D2R	56645SF
D3S	56646SF
D4S	56647SF



Standard



Xenon X-tremeVision gen2

Images for illustration purposes only

Enjoy your passion



Xenon WhiteVision gen2

Extra white LED effect

- Up to 5000K white light on the road
- Up to 120% more vision*
- UV-blocking quartz glass
- 3 year warranty
- ECE Approved and road legal

Philips Xenon WhiteVision gen2 bulbs create an **intense white look** of your car and produce brighter, homogeneous white light on the road. Xenon WhiteVision gen2 is the **perfect choice** if you wish to mix and match xenon and LED lighting on your car.

www.philips.com/xenongen2

*Compared to the minimum legal standard (except for D2R that provides up to 20% more vision).

Available in S1 & SF packaging



Available in



D1S



D2S



D2R



D3S

Dummy Retail Packs

Type	Part No.
D1S	85415WHV2
D2R	85126WHV2
D2S	85122WHV2
D3S	42403WHV2

Type	Part No.
D1S	56640SF
D2S	56641SF
D3S	56642SF

Pure and bright white light defeats darkness

3
years
warranty



Standard



Xenon WhiteVision gen2

Xenon solutions

Xenon

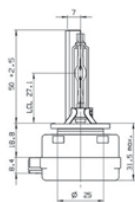
Images for illustration purposes only

Xenon Range Index



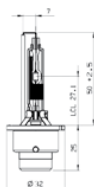
D1 Ballast

Range	Part No.	Volts	Watts	Base	Pack	QTY
Standard	85988X2	85V	35W	Ballast	Box	2



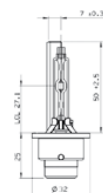
D1S

Range	Part No.	Volts	Watts	Base	Kelvin*	Pack	QTY
X-tremeVision gen2 +150%	85415XV2	85V	35W	PK32d-2	4800K	Blister	1
	56643SF	Dummy Retail Pack					Blister
WhiteVision gen2 5000K & +120%	85415WHV2	85V	35W	PK32d-2	5000K	Blister	1
	56640SF	Dummy Retail Pack					Blister
Standard	85415P	85V	35W	PK32d-2	4300K	Box	1



D2R

Range	Part No.	Volts	Watts	Base	Kelvin*	Pack	QTY
X-tremeVision gen2 +150%	85126XV2	85V	35W	P32d-3	4800K	Blister	1
	56645SF	Dummy Retail Pack					Blister
WhiteVision gen2 5000K & +120%	85126WHV2	85V	35W	P32d-3	5000K	Blister	1
Standard	85126P	85V	35W	P32d-3	4300K	Box	1

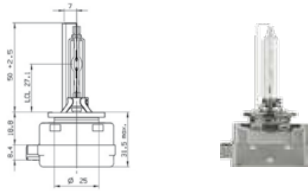


D2S

Range	Part No.	Volts	Watts	Base	Kelvin*	Pack	QTY
X-tremeVision gen2 +150%	85122XV2	85V	35W	P32d-2	4800K	Blister	1
	56644SF	Dummy Retail Pack					Blister
WhiteVision gen2 5000K & +120%	85122WHV2	85V	35W	P32d-2	5000K	Blister	1
	56641SF	Dummy Retail Pack					Blister
Standard	85122P	85V	35W	P32d-2	4300K	Box	1



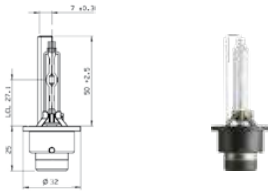
Xenon Range Index



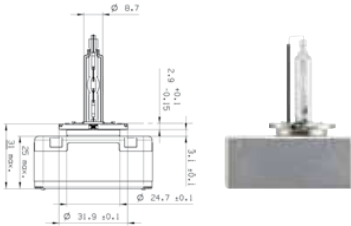
D3S							
Range	Part No.	Volts	Watts	Base	Kelvin*	Pack	QTY
X-tremeVision gen2 +150%	42403XV2	42V	35W	PK32d-5	4800K	Blister	1
	56646SF	Dummy Retail Pack				Blister	1
WhiteVision gen2 5000K & +120%	42403WHV2	42V	35W	PK32d-5	5000K	Blister	1
	56642SF	Dummy Retail Pack				Blister	1
Standard	42403	42V	35W	PK32d-5	4300K	Box	1



D4R							
Range	Part No.	Volts	Watts	Base	Kelvin*	Pack	QTY
Standard	42406	42V	35W	P32d-6	4300K	Box	1



D4S							
Range	Part No.	Volts	Watts	Base	Kelvin*	Pack	QTY
X-tremeVision gen2 +150%	42402XV2	42V	35W	P32d-5	4800K	Blister	1
	56647SF	Dummy Retail Pack				Blister	1
Standard	42402	42V	35W	P32d-5	4300K	Box	1



D5S							
Range	Part No.	Volts	Watts	Base	Kelvin*	Pack	QTY
Standard	12410	12V	25W	PK32d-7	4300K	Box	1



LED



Our LED lighting for cars and trucks is designed and manufactured at consistent high quality

LED

lighting for cars and trucks

Our **LED lighting** illuminates the vehicle's interior and exterior with power and precision. Choose a range of temperatures from 4000K to up to 6500K, from powerful, warm white to ultimate blue light for **maximum perception** and **styling**.

www.philips.com/automotive

Which LED lighting do you need?



The next level of white light.
Bright signals. Stylish driving.



Stunning illumination
Brighter. Whiter. Stronger.



Ultinon LED



- Up to +160%* brighter LED headlights
- Bright LED signalling and interior lights
- Up to 8-year lifetime
- Good light diffusion
- 2 year warranty

Available in

Headlights and fog

[=H4], [=H7],
[=H8/H11/H16]

Signal and interior lights

[=W5W], [=W16W], [=W21W], [=W21/5W], [=WY21W],
[=P21W], [=P21/5W], [=PY21W], [=P27/7W], [=P27W]
FEST 30mm/38mm/43mm, Reading Lamp

X-tremeUltinon LED



- Up to +200%* brighter LED headlights
- Brighter LED signalling and interior lights
- Up to 12-year lifetime
- Superior light diffusion
- 3 year Warranty

Available in

Headlights and fog

[=H4], [=H7], [=H11], [=HB3],
[=HB4], [=HIR2], [=H8/H11/H16]

Signal and interior lights

[=W5W], [=W16W], [=W21W], [=W21/5W],
[=WY21W], [=P21W], [=P21/5W], [=PV21W],
FEST 30mm/38mm, Reading Lamp

LED car lighting

LED

* Compared to the ECE minimum legal standard for halogen bulbs.

Important LED lighting is for interior and off-road use only. Philips LED headlamps, fog and signalling bulbs are currently not ECE homologated or ADR approved and are not for use on public roads.

For more information, please contact your Philips representative. Images are non-contractual and may be modified.



Enjoy your passion

  **Low/high beam & Fog lights**

X-tremeUltinon LED Headlights & Fog

BRIGHTER. WHITER. STRONGER



3
years
warranty



- Up to **+200%** brighter* light
- 6000 Kelvin crisp white light



- **SafeBeam** technology
- Superior light diffusion**



- **AirFlux / AirCool***** Smart cooling systems



- Philips Automotive Grade Quality
- Automotive EMI compliant (Electromagnetic interference)
- **IP65** rating /vibration resistant / Heat resistant
- **12 years lifetime**
- **3 years warranty**
- **For off road use only, not approved for ADR, ECE or DOT.**



* Compared to the ECE minimum legal standard for halogen bulbs

** Available for [≈H7], [≈H11], [≈HB3/HB4], [≈HIR2]

*** Available for [≈H7], [≈HB3/HB4], [≈HIR2]

Available in



[≈H4] [≈H7] [≈H11] [≈HB3/HB4] [≈HIR2] [≈H8/11/16] 6000K [≈H8/11/16] 2700K

Type	Part No.
H4	12953BWX2
H7	12985BWX2
H11	11362XUX2
HB3/4	11005XUX2
HIR2	11012XUX2
Fog 6000K	12834X2
Fog 2700K	12793X2



Standard



X-tremeUltinon LED

Images for illustration purposes only



Position lights

X-treme Ultinon LED

Bright vibrant lights to signal with style

- Xtreme light performance
- Ideal match for Xenon and LED headlight
- Philips CeraLight durable thermal design technology
- 12 year lifespan
- Available in 6000K & 6500K



Standard halogen



X-treme Ultinon LED

Available in X2



Sparkling bright effect



3 years warranty



Type	Part No.
T10	127996500KX2
T10	127996000KX2



Stop/tail

X-treme Ultinon LED

Bright vibrant lights to signal with style

- Match the deep red color style trend
- Instant-On to get noticed faster
- 12 year lifespan

RED



Incandescent bulb



X-treme Ultinon LED

Available in X2



Intense bright light



3 years warranty



Type	Part No.
W21/5	12768X2
P21	12898RX2
P21/5	12899RX2

LED car lighting



Images for illustration purposes only

↔ ⇄ **Front & rear indicators**

X-treme Ultinon LED

Bright vibrant lights to signal with style

- Maximum road safety
- Get noticed with intense amber color
- 12 year lifespan

AMBER



Available in X2



Intense bright light



3 years warranty



Type	Part No.
PY21	12764X2
WY21	12763X2

↔ **Reverse lights**

X-treme Ultinon LED

Bright vibrant lights to signal with style

- Upgrade light performance for reverse
- Maximum road safety
- More style with white bright light (6000K)
- 12 year lifespan



Available in X2 & X1 (T16)



Intense bright light



3 years warranty



Type	Part No.
P21	12898X2
T16	12832X1
W21	12795X2

Images for illustration purposes only



License plate lights

X-treme Ultinon LED

Bright vibrant lights to signal with style

- License plate upgrade
- 360° uniform light diffusion
- Philips CeraLight durable thermal design technology
- 12 year lifespan



Standard halogen



X-treme Ultinon LED

Available in X1 (Festoon) & X2



Sparkling bright effect



3 years warranty



Type	Part No.
Festoon 38mm	129446000KX1
T10 6500K	127996500KX2
T10 6000K	127996000KX2



Interior light

X-treme Ultinon LED

See more inside your car with brighter and stylish Philips LED lighting

- Upgrade to white interior
- Clear interior visibility
- Uniform light diffusion
- 12 year lifespan



Standard halogen



X-treme Ultinon LED

Available in X1 & X2 (T10)



Bright modern interior



3 years warranty



Type	Part No.
Festoon 30mm 6000K	129416000KX1
Festoon 30mm 6500K	129416500KX1
Festoon 38mm 6000K	129446000KX1
LED Reading	129576000KX1
T10 6500K	127996500KX2
T10 6000K	127996000KX2

LED car lighting

LED

CANbus

X-treme Ultinon LED

- Removes warning dash light, high beam signal & pulsing/fast flashing bulbs
- Easy wire clip on
- 5W and 21W versions available for signalling applications
- Headlight versions available also.

Compatible with Philips LED



Type	Part No.
CANbus 21W	18957X2
CANbus 5W	12956X2
H4 CANbus	18960C2
H7 CANbus	18952C2
H11/Fog CANbus	18954C2
HB3/HB4/HIR2 CANbus	18956C2

LED HL Connector Rings

X-treme Ultinon LED

- Improves fit of LED H7 headlights
- Made from durable metal
- Available in Type B & Type C connections.



Type	Part No.
LED H7 Ring Type B	11172BX2
LED H7 Ring Type C	11172CX2

Ultinon LED



The next level of white light.

Bright signals. Stylish driving.

With a high color temperature of up to **6000 Kelvin**, the **Philips Ultinon LED headlight** produces a bright white, daylight-like beam. With clearer vision you're better able to spot obstacles and take the perfect driving line. And as you don't have to strain to see the terrain ahead, brighter lights make for a more comfortable and exciting night-time drive.

Philips Ultinon LED Headlights uses a brand new bulb design integrating driver box electronics in the bulb body providing a more compact design, simplifying the installation.

Enjoy your passion



New

  **Low/high beam & Fog lights**

Ultinon LED Headlights & Fog

The next level of white light

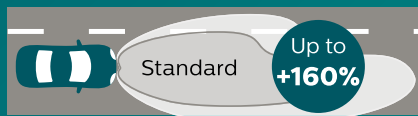


- Up to +160% brighter* light
- 6000 Kelvin crisp white light
- SafeBeam technology
- AirFlux Smart cooling systems
- Philips Automotive Grade Quality
- Automotive EMI compliant (Electromagnetic interference)
- IP65 rating /vibration resistant / Heat resistant
- 8 years lifetime
- 2 years warranty
- **For off road use only, not approved for ADR, ECE or DOT.**



2
years
warranty

* Compared to the ECE minimum legal standard for halogen bulbs



Available in



[≈H4]



[≈H7]



[≈H8/11/16]



Standard



Ultinon LED

Type	Part No.
H7	11972ULX2
H4	11342ULX2
Fog H8/11/16	11366ULX2

Images for illustration purposes only



Position lights

Ultinon LED

Upgrade your lights, upgrade your style

- Brighter signals for improved safety
- Durable and long-lasting LED lighting
- Up to 6000K colour temperature

WHITE

Available in X2



Type	Part No.
T10 (W5W)	11961ULWX2



Stop/tail

Ultinon LED

Upgrade your lights, upgrade your style

- Brighter signals for improved safety
- Durable and long-lasting LED lighting
- Available in White & Red

WHITE

RED

Available in X2



Type	Part No.
T20 Red (W21W)	11065ULRX2
T20 Red (W21/5W)	11066ULRX2
S25 Red (P21W)	11498ULRX2
S25 Red (P21/5W)	11499ULRX2

Type	Part No.
P27 Red (P27/7W)	3157RULRX2
P27 White (P27/7W)	3157ULWX2
S25 White (P21/5W)	11499ULWX2
T20 White (W21/5W)	11066ULWX2



Front & rear indicators

Ultinon LED

Upgrade your lights, upgrade your style

- Brighter signals for improved safety
- Durable and long-lasting LED lighting
- Good light distribution for enhanced visibility

AMBER

Available in X2



Type	Part No.
S25 (PY21W)	11498ULAX2
T20 (WY21W)	11065ULAX2
P27 (P27/7W)	3157AULAX2

LED car lighting

LED

Images for illustration purposes only



Reverse lights

Ultinon LED

Upgrade your lights, upgrade your style

- Brighter signals for improved safety
- Durable and long-lasting LED lighting
- Good light distribution for enhanced visibility
- Up to 6000K colour temperature

WHITE



Available Available in X1 (T16 only) & X2



2 years warranty



Type	Part No.
T16 (W16W)	11067ULWX1
T20 (W21W)	11065ULWX2
S25 (P21W)	11498ULWX2
P27 (P27W)	3156ULWX2



Interior lights

Ultinon LED

See more inside your car with brighter and stylish Philips LED lighting.

- Upgrade to white interior
- Clear interior visibility
- Uniform light diffusion
- 12 year lifespan
- Up to 6000K colour temperature

WHITE



Available in X1 & X2 (T10 only)

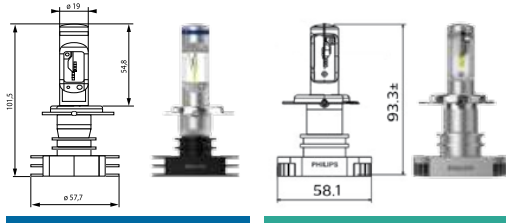


2 years warranty



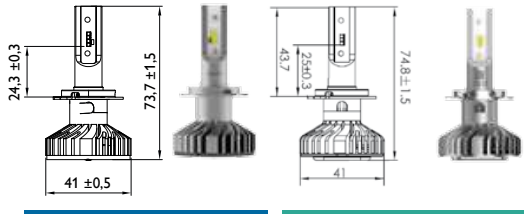
Type	Part No.
T10 (W5W)	11961ULWX2
Festoon (30mm)	11860ULWX1
Festoon (38mm)	11854ULWX1
Festoon (43mm)	11864ULWX1
Multi-reading	12957ULWX1

LED Headlight Range Index



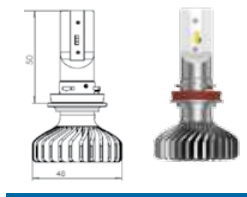
H4

Range	Part No.	Volts	Watts	Base	Kelvin*	Pack	Qty
Ultinon	11342ULX2	12V	15.5W	P43t-38	6000K	Twin	2
X-treme Ultinon	12953BWX2	12/24V	23W	P43t-38	6000K	Twin	2



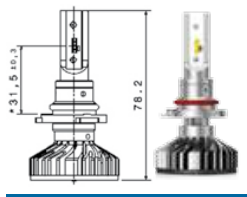
H7

Range	Part No.	Volts	Watts	Base	Kelvin*	Pack	Qty
Ultinon	11972ULX2	12V	14W	PX26d	6000K	Twin	2
X-treme Ultinon	12985BWX2	12V	25W	PX26d	6000K	Twin	2



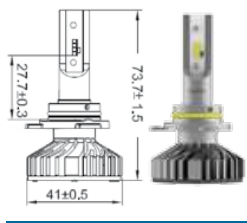
H11

Range	Part No.	Volts	Watts	Base	Kelvin*	Pack	Qty
X-treme Ultinon	11362XUX2	12V	22W	PGJ19-2	6000K	Twin	2



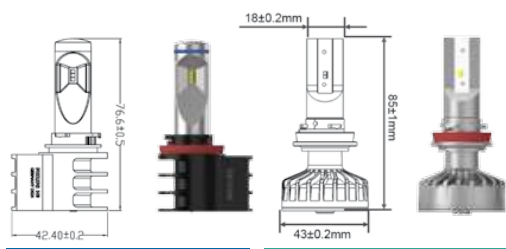
HB3/4

Range	Part No.	Volts	Watts	Base	Kelvin*	Pack	Qty
X-treme Ultinon	11005XUX2	12V	25W	P20d/P22d	6000K	Twin	2



HIR2

Range	Part No.	Volts	Watts	Base	Kelvin*	Pack	Qty
X-treme Ultinon	11012XUX2	12V	25W	PX22d	6000K	Twin	2



Fog - H8/11/16

Range	Part No.	Volts	Watts	Base	Kelvin*	Pack	Qty
Ultinon	11366ULX2	12V	10.5W	PGJ19-1/2/3	6000K	Twin	2
X-treme Ultinon	12834X2	12V	10W	PGJ19-1/2/3	6000K	Twin	2
X-treme Ultinon	12793X2	12V	10W	PGJ19-1/2/3	2700K	Twin	2

*All kelvin figures quoted are up to and including the figure. Kelvin numbers may vary depending on bulb type

LED Accessories Range Index

CANbus Range



Range	Part No.	Type	Volts	Pack	Qty
X-treme Ultinon	18960C2	H4 CANbus	12V	Twin	2
	18952C2	H7 CANbus	12V	Twin	2
	18954C2	H8/11/16 CANbus	12V	Twin	2
	18956C2	HB3/4/HIR2 CANbus	12V	Twin	2
	18957X2	21W CANbus	12V	Twin	2
	12956X2	5W CANbus	12V	Twin	2

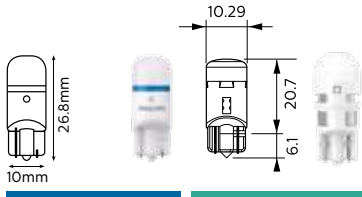
LED Adapter Rings



Range	Part No.	Type	Pack	Qty
X-treme Ultinon	11172BX2	LED H7 Ring Type B	Twin	2
	11172CX2	LED H7 Ring Type C	Twin	2



LED Signalling Range Index



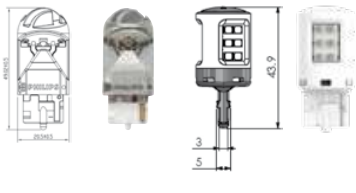
T10 (W5W)

Range	Part No.	Volts	Watts	Base	Kelvin	Pack	Qty
Ultinon	11961ULWX2	12V	0.6W	W2.1x9.5d	6000K	Twin	2
X-treme Ultinon	127996500KX2	12V	0.9W	W2.1x9.5d	6500K	Twin	2
	127996000KX2	12V	0.9W	W2.1x9.5d	6000K	Twin	2



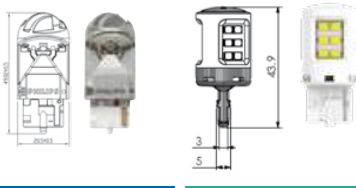
T16 (W16W)

Range	Part No.	Volts	Watts	Base	Kelvin	Pack	Qty
Ultinon	11067ULWX1	12V	2.3W	W2.1x9.5d	6000K	Single	1



T20 (W21, WY21)

Range	Part No.	Volts	Watts	Base	Kelvin	Pack	Qty
Ultinon	11065ULWX2	12V	1.95W	WX3x 16d	6000K	Twin	2
	11065ULRX2	12V	2.7W	WX3x 16d	RED	Twin	2
	11065ULAX2	12V	0.75W	WX3x 16d	AMBER	Twin	2
X-treme Ultinon	12763X2	12V	5.5W	WX3x 16d	AMBER	Twin	2
	12795X2	12V	3W	WX3x 16d	6000K	Twin	2



T20/5W (W21/5W)

Range	Part No.	Volts	Watts	Base	Kelvin	Pack	Qty
Ultinon	11066ULWX2	12V	0.45/1.5W	WX3x 16d	6000K	Twin	2
	11066ULRX2	12V	2.7W	WX3x 16d	RED	Twin	2
X-treme Ultinon	12768X2	12V	0.36/1.97W	WX3x 16d	RED	Twin	2



S25 (P21, PY21)

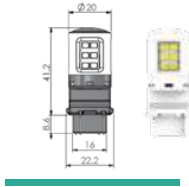
Range	Part No.	Volts	Watts	Base	Kelvin	Pack	Qty
Ultinon	11498ULWX2	12V	1.95W	BA15s	6000K	Twin	2
	11498ULRX2	12V	2.7W	BA15s	RED	Twin	2
	11498ULAX2	12V	0.75W	BA15s	AMBER	Twin	2
X-treme Ultinon	12898X2	12V	4.3W	BA15s	6000K	Twin	2
	12898RX2	12V	1.9W	BA15s	RED	Twin	2
	12764X2	12V	4.3W	BAU15s	AMBER	Twin	2



S25 (P21/5)

Range	Part No.	Volts	Watts	Base	Kelvin	Pack	Qty
Ultinon	11499ULWX2	12V	0.45/1.5W	BA15s	6000K	Twin	2
	11499ULRX2	12V	2.7W	BA15s	RED	Twin	2

LED Signalling Range Index



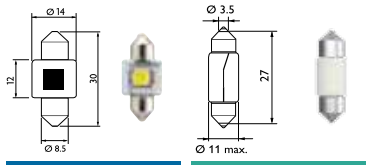
S8 (P27)

Range	Part No.	Volts	Watts	Base	Kelvin	Pack	Qty
Ultinon	3156ULWX2	12V	1.95W	W2.5x16d	6000K	Twin	2



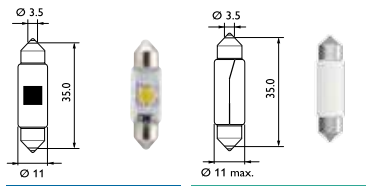
S8 (P27/7W)

Range	Part No.	Volts	Watts	Base	Kelvin	Pack	Qty
Ultinon	3157WULWX2	12V	0.45/1.5W	W2.5x16d	6000K	Twin	2
	3157RULRX2	12V	2.7W	W2.5x16d	RED	Twin	2
	3157AULAX2	12V	0.75W	W2.5x16d	AMBER	Twin	2



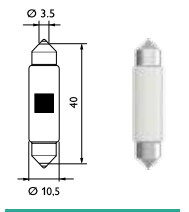
FESTOON 30mm

Range	Part No.	Volts	Watts	Base	Kelvin	Pack	Qty
Ultinon	11860ULWX1	12V	0.6W	SV8.5-8	6000K	Single	1
X-treme Ultinon	129416000KX1	12V	0.75W	SV8.5	6000K	Single	1



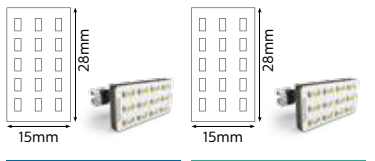
FESTOON 38mm

Range	Part No.	Volts	Watts	Base	Kelvin	Pack	Qty
Ultinon	11854ULWX1	12V	0.6W	SV8.5-8	6000K	Single	1
X-treme Ultinon	129446000KX1	12V	0.75W	SV8.5	6000K	Single	1



FESTOON 43mm

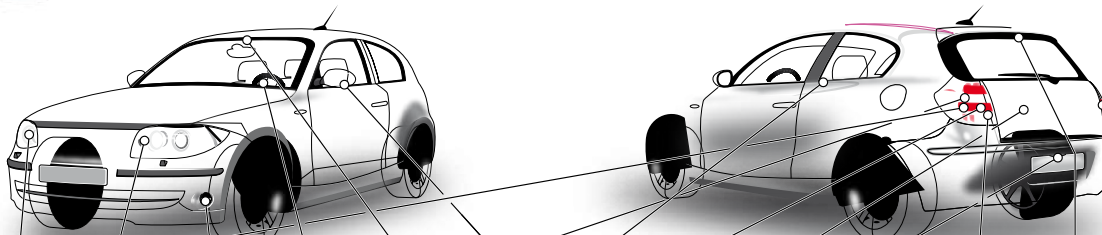
Range	Part No.	Volts	Watts	Base	Kelvin	Pack	Qty
Ultinon	11864ULWX1	12V	0.6W	SV8.5-8	6000K	Single	1



READING LIGHT/MULTI

Range	Part No.	Volts	Watts	Base	Kelvin	Pack	Qty
Ultinon	12957ULWX1	12V	0.9W	SV8.5-8	6000K	Single	1
X-treme Ultinon	129576000X1	12V	0.9W	SV8.5-8	6000K	Single	1

Which LED lighting for which function



Headlights	Front/rear position/parking lights	Front fog lights	Dashboard lights	Interior lights	Front/rear indicators	Glove compartment lights	Rear fog lights	Boot lights	License plate lights	Reversing light	3rd stop light	Stop lights

X-tremeUltinon LED – Stunning illumination

Ultinon LED – The next level of white light. Bright signals. Stylish driving.

CANbus adapter for optimal control

LED-CANbus for [≈H4] [≈H7] [≈H11] [≈HB3/4] [≈HIR2]	LED-CANbus for [≈5W]	LED-CANbus for [≈H4] [≈H7] [≈H11] [≈HB3/4]	LED-CANbus for [≈5W]	LED-CANbus for [≈5W]	LED-CANbus for [≈21W]	LED-CANbus for [≈5W]	LED-CANbus for [≈21W]	LED-CANbus for [≈5W]	LED-CANbus for [≈5W]	LED-CANbus for [≈21W]	LED-CANbus for [≈21W]	LED-CANbus for [≈21W]

LED car lighting

LED

Kits

Headlight Restoration Kit

Our **Headlight restoration kit** renovates car, truck and motorcycle lenses to like-new condition. It's our **cost-effective alternative** to complete headlight replacement.

www.philips.com/automotive

Headlight restoration kit



Safety

Restores headlight lenses to like-new condition!

- Less glare and up to 100% brighter lenses
- Provides safer night-time driving
- Removes haze and yellowing from harmful UV-rays and dirt
- Professional results without power tools in 30 minutes
- High-quality and economical
- 2-year UV-protection guaranteed

Removes the fading and yellowing of headlight lenses and restores them to their original state of **transparency** for **greater safety**. Headlight lenses fade and oxidise from constant exposure to the elements and become scratched due to impacts.

Type	Part No.
Headlight Restoration Kit	HRK00



Before



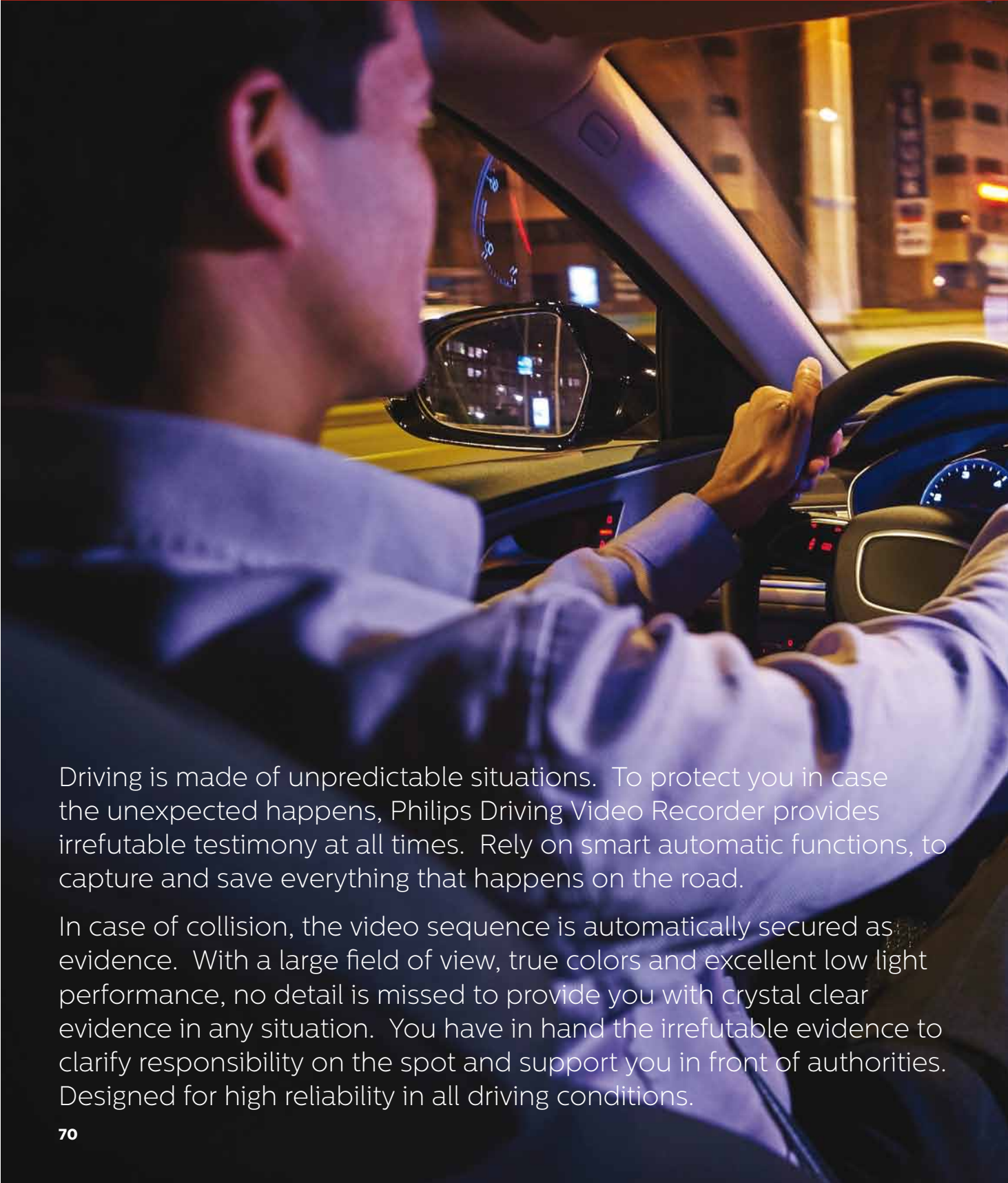
After

Images for illustration purposes only

Spare kits for cars and trucks

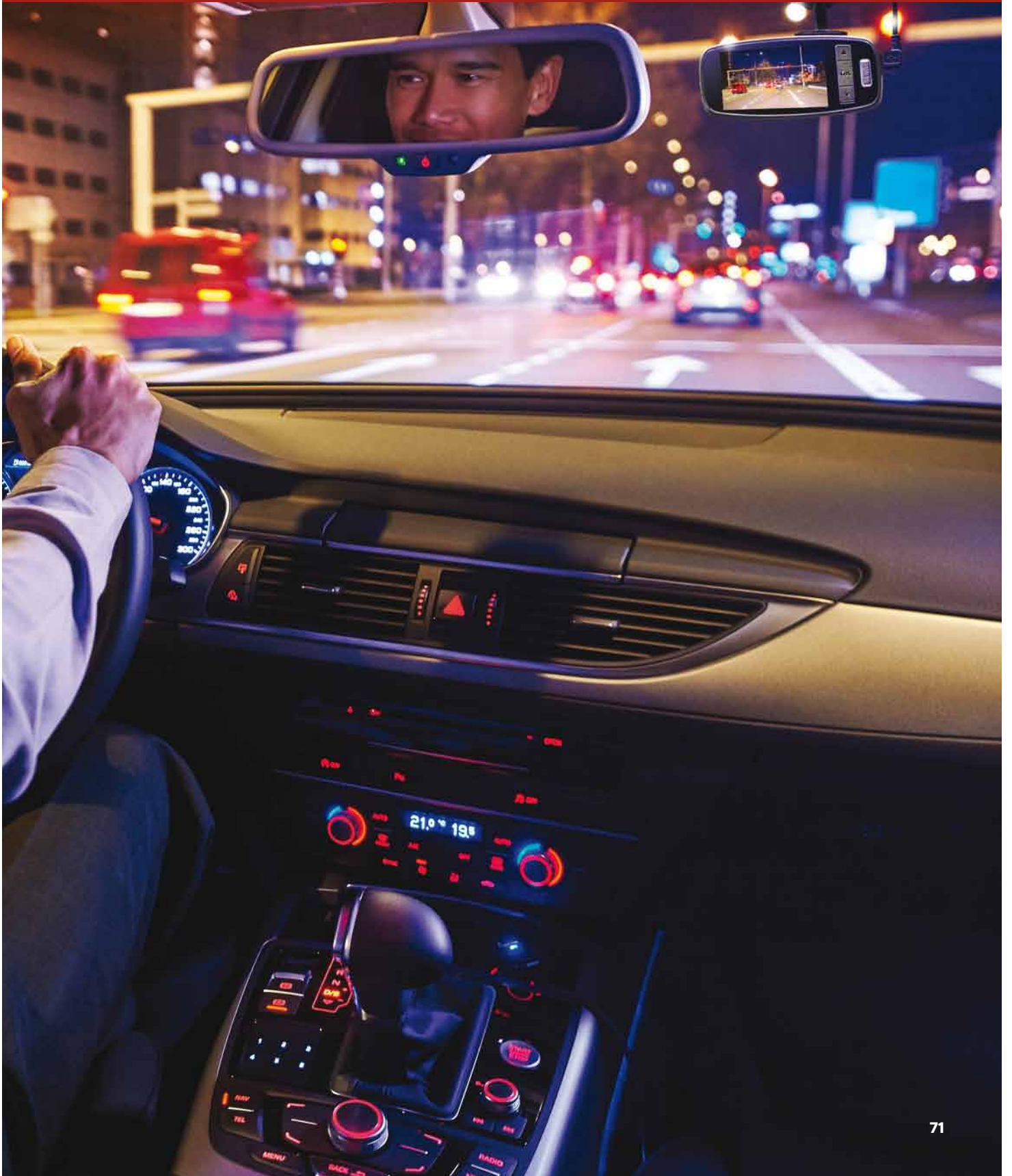
Kits

Driving Video Recorder

A photograph of a driver at night, seen from the side, wearing a light-colored shirt. The driver is holding the steering wheel. The car's interior is visible, including the side mirror and dashboard. The background shows a city street at night with blurred lights and buildings.

Driving is made of unpredictable situations. To protect you in case the unexpected happens, Philips Driving Video Recorder provides irrefutable testimony at all times. Rely on smart automatic functions, to capture and save everything that happens on the road.

In case of collision, the video sequence is automatically secured as evidence. With a large field of view, true colors and excellent low light performance, no detail is missed to provide you with crystal clear evidence in any situation. You have in hand the irrefutable evidence to clarify responsibility on the spot and support you in front of authorities. Designed for high reliability in all driving conditions.





Driving Video Recorder

ADR620

Your reliable eye-witness on the road

- Full-HD 1080p sharp recording
- 120° angle & bright F2.0 lens
- Good night view performance
- With a convenient built-in 2" LCD screen
- Automatic recording
- Collision detecting G sensor
- Driver fatigue alert warning



ADR62



Part No.	Description	Video Quality	Recording Angle	Night View	WaveGuard	Park Monitoring	Auto recording & crash video protection	Built-in battery	V	Packing
ADR620	Automotive Driving Recorder 620	Full-HD 1080p	120	Enhanced Night View	-	-	Yes	340mAh	12V	X1



Driving Video Recorder

ADR900

Your personal road safety guardian with WaveGuard 24/7 parking monitoring

- WaveGuard 24/7 parking monitoring
- Fatigue index with driver alert
- Capture more of the scene with a real 171° degree super wide angle
- Emergency Capture to catch the unexpected, always
- Vivid details with 1080p Full HD denition
- Perfect night view



Driving Video Recorder

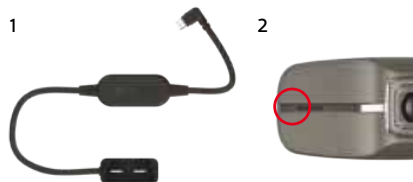
WaveGuard 24/7 parking monitoring



Even when you are away, Philips WaveGuard will watch over your car and capture evidence if vandalism act is detected, day and night.



ADR900



1. Connected with Philips plug and play cable to the OBD plug of your car, you have the insurance that Wave Guard will always watch over your car during parking, without draining your vehicle battery.
2. A red LED will ash on front of the device as soon as WaveGuard record a moving object approaching too close.

Part No.	Description	Video Quality	Recording Angle	Night View	WaveGuard	Park Monitoring	Auto recording & crash video protection	Built-in battery	V	Packing
ADR900	Automotive Driving Recorder 900	Full-HD 1080p	171	Perfect Night View-ISO6400	Yes	-	Yes	-	OBD	X1

Lighting technology explained

www.philips.com/automotive

■ Asymmetrical beam pattern

An offset beam pattern for low-beam applications. Provides a longer beam in the lane of travel, which avoids blinding oncoming traffic.

■ Ballast

The electronic driver that controls a xenon HID bulb.

■ Base

Bottom part of the bulb which ensures a proper mechanical and electrical connection with the bulb unit of the car. Its precision is important for a correct beam pattern.

■ Board voltage

Electrical voltage in the board net of the vehicle. In cars, the operational voltage at the bulb connector typically varies between 13 and 14 volts (V). The official test voltage for halogen headlight bulbs is 13.2 V according to ECE R37. For trucks with a 24 V board net the test voltage is 28 V. The board voltage has a significant impact on filament bulb lifetime. In general, a 5% voltage increase reduces the lifetime by 50%.

■ Burner

Burner is the glass part of a halogen or xenon HID bulb in which the light emission is generated. It consists of hard or quartz glass and contains the filament and the two electrodes.

■ Candela (cd)

Unit of luminous intensity that measures the amount of luminous power emitted by a light source in a particular direction.

■ Color temperature

Thermal measure for light color. Derived from the color emitted by a "black body" which is heated up to a certain temperature (see also Kelvin).

■ Cut-off zone

The line between the bright and dark zones of low beam light. Above the cut-off zone the amount of light is limited in order to avoid blinding oncoming traffic.

■ D(...)

Nomenclature for xenon HID bulbs where **D** stands for "discharge." Available technical types: **D1S, D1R, D2S, D2R, D3S, D3R, D4S, D4R** and **D5S**.

D1 and **D2** First bulbs introduced in 1991

D3 and **D4** Mercury-free bulbs that replace D1 and D2
For D1 and D3, the electronic high-voltage starter is already integrated in the bulb base. The **S** type is used with projector (lens) systems. Version **R** is used in open reflectors and features an additional coating on the outer tube (pinstripe) which blocks out some areas to avoid glare. The **D5S** is a 25-watt bulb with integrated starter and integrated ballast.

■ Discharge bulb

The correct, technical term of the so-called xenon bulb is **high-intensity discharge** bulb. The light is emitted by an electric arc which is produced between two electrodes. **See also** HID and xenon light.

■ DOT

The United States Department of Transportation which oversees federal highway, air, railroad, maritime and other transportation administration functions. It fulfills a role similar to the Economic Commission for Europe (ECE).

■ DRL

Daytime Running Lights.

■ ECE

Economic Commission for Europe. One of five regional commissions of the United Nations (UN) based in Geneva that contributes to enhancing the effectiveness of the UN through the regional implementation of outcomes of global UN Conferences and Summits. The ECE is responsible for harmonising technical specifications for vehicles whose regulations are also mandatory in many countries outside Europe.

■ ECE R

This stands for the ECE Regulation.

Examples for vehicle lighting:

R37 Filament bulbs

R99 Gas-discharge light sources

R48 Installation of lighting and light-signalling devices

■ Electric arc

The connecting luminous discharge between the two electrodes of a xenon HID bulb. This is similar in principle to a bolt of lightning. The electric arc is created by the high-voltage starter and stabilised and controlled by the ballast.

■ Electrodes

Electrical conductors which are positioned opposite each other in the vessel of a xenon gas-discharge bulb.

The electric arc, which emits light, is produced between the electrodes.

■ E-mark

The ECE mark of approval. The digit following the "E" indicates in which country the approval has been granted. For example: E1 indicates Germany and E2 indicates France. An approval granted by one ECE member is valid for all member states and is typically adopted by national regulations. Single minor deviations are possible.

■ Festoon

A tube-shaped bulb with contacts at each end such as C5W, which is commonly used for interior and license plate lighting.

■ Filament

A coiled tungsten wire that emits light.

■ H(...)

Nomenclature for halogen bulbs. H = halogen. The bulbs are numbered consecutively. The most common types are:

H1 First halogen bulb (single filament).

H4 Double filament for both low beam and high beam application in one headlight unit.

H7 Most common halogen bulb in Europe for low beam, high beam, and fog lighting.

■ Halogen

A gas that is used to create the halogen cycle process in a light bulb. During operation the tungsten molecules evaporate from the tungsten. In the cycle process they combine with the halogen molecules and fall back to the wire. This extends the lifetime of a bulb and allows operation at a higher intensity. Halogen bulbs contain a high-pressure halogen filling. Non-halogen incandescent bulbs often use a vacuum.

■ HB(...)

ECE name of original North American bulb types which were approved for use in Europe as well. For example: HB3 refers to 9005 and HB4 refers to 9006.

■ Hg

Symbol for mercury (Latin: hydrargyrum). Xenon bulb types D1 and D2 still contain approximately one third of the amount of mercury as a normal domestic energy-saving bulb. D3, D4 und D5 are completely mercury free.

■ HID

High Intensity Discharge. Correct technical name for a so-called xenon bulb.

See also gas-discharge bulb, xenon light, xenon system.

■ High-voltage starter

Creates high-voltage pulses of approximately 20,000 volts to ignite the electric arc in a xenon HID bulb.

■ HiPerVision

Very compact signalling-bulb range with high-precision filaments and a long lifetime. For use in signalling lights, fog lights, rear and daytime running lights.

■ Illuminance (lux)

Contrary to luminous flux (lumen), which is a measure of the total amount of light emitted by a light source, illuminance describes the amount of luminous flux per unit area, such as on the road. This is measured with a lux meter.

■ Kelvin (K)

A unit of measure of temperature based upon an absolute scale whereby zero (minus 273° C) represents the point where all thermal motion ceases. In lighting, however, this is a measure of color temperature. The higher the color temperature, the whiter and cooler the light appears.

■ LED

Light Emitting Diode.

■ Lifetime

Statistical data that indicate the failure rate of a percentage of bulbs operated at a specific voltage over a certain period of time. Common lifetime data indication:

B3 Time when statistically 3% of the test samples have failed

TC Time when 63% of the test samples have failed.

■ Luminance

The intensity of light emitted from a surface per unit area in a given direction from, for example, the filament or the electric arc of a xenon HID bulb. An important indicator of the amount of light a headlight unit provides on the road. The unit is candela/m² (cd/m²).

■ Lumen (lm)

Unit of luminous flux.

■ Luminous flux (lumen)

The total amount of light that is emitted by a light source in all directions.

■ Lux (lx)

Unit of illuminance. 1 Lux = 1 lm/m².

See also Illuminance.

■ Lux meter

Illuminance measuring device.

■ Pb

Symbol for lead (Latin: plumbum).

All Philips automotive bulbs are **lead-free**.

■ Quartz glass

Temperature and pressure resistant glass for halogen and xenon HID bulbs. The glass also has a special coating to block out harmful ultraviolet (UV) light.

■ Tungsten

Filament and electrode material.

■ UV-block

Ultraviolet (UV) blocking glass absorbs the UV light created by the filament or the electric arc. UV block is mandatory for all ECE complying car bulbs because UV light can damage the plastic cover of the headlamp.

See also Quartz glass.

■ Wedge base

Bulb with a glass base, such as W5W. Mainly used for parking lights, side indicators and interior lighting.

■ Xenon (Xe)

One of the noble gases. Commonly used to refer to HID bulbs.

■ Xenon light

Headlights with HID bulbs.

See also D(...), Discharge bulb, HID.

■ Xenon system

A complete xenon system consists of the HID bulb, the high-voltage starter and the electronic ballast which controls the electric arc.