

Specifications

Nominal Voltage (V)	12 Volts	
Cold Cranking Amps (CCA)	780 CCA	
Reserve Capacity (Min)	225 Minutes	
Nominal Capacity (20Hr)	105 Ah	
Dimensions	Length	305 ± 2mm
	Width	168 ± 2mm
	Container Height	207 ± 2mm
	Total Height (with Terminal)	213 ± 2mm
	Approx Weight	Approx 27.40 Kg
Terminal Type/Torque	T6 @ 14.6 N.m (with Satin Forged Brass SAE terminals)	
Container Material	ABS Fire Retardant	
Rated Capacity	-104.0 Ah/5.25 A	(20hr, 1.80V/cell, 25°C)
	- 101Ah/10.1A	(10hr, 1.80V/cell, 25°C)
	- 89.0Ah/17.75A	(5hr, 1.75V/cell, 25°C)
	- 77.2Ah/25.7A	(3hr, 1.75V/cell, 25°C)
	- 64.8Ah/64.8	(1hr, 1.60V/cell, 25°C)
Max. Discharge Current (5s)	1000 A	
Internal Resistance	Approx 2.5m Ohm	
Operating Temp. Range	Discharge	: -5 ~ 50°C
	Charge	: -15 ~ 40°C
	Storage	: -15 ~ 40°C
Nominal Operating Temp. Range	-15°C to 65°C	
Cycle Use	Initial Charging Current less than 30 A	
	Voltage 14.4V~15.0V at 25°C	
	Temp. Coefficient - 30mV/°C	
Standby Use	No limit on Initial Charging Current	
	Voltage 13.5V~13.8V at 25°C	
	Temp. Coefficient - 30mV/°C	
Capacity affected by Temperature	40°C	103%
	25°C	100%
	0°C	86%
Warranty	3 Years	
Design Life	5-10 Years (Cycle Use)	



Applications

- ◆ Marine
- ◆ Caravans & Motorhomes
- ◆ Trucks & Earth Moving Equipment
- ◆ Portable Apparatus
- ◆ Lights & Instruments
- ◆ Illumination Lights
- ◆ Fire Alarms
- ◆ Portable Power
- ◆ Medical Equipment

Vds	Intertek ETL SEMKO	UL MH2686
ISO14001	ISO9001	CE EMC tested

Self Discharge

SSB DryCell series batteries may be stored for up to 6 months at 25°C and then a freshening charge is required. For higher temperatures the time interval will be shorter.

Constant Current Discharge (Amperes) at 25°C

F.V/Time	10min	15min	20min	30min	45min	1h	2h	3h	4h	5h	6h	8h	10h	20h
1.85V/cell	146.4	123.2	107.7	77.5	61.5	49.9	31	24.2	19.6	15.9	13.9	11.3	9.4	5.31
1.80V/cell	187.1	148.9	127.3	91.4	71.6	55.9	33.9	26	20.9	17.1	14.9	12	10	5.36
1.75V/cell	205.6	162.6	136.9	94.9	74.3	58.5	35.1	26.5	21.4	17.5	15.3	12.2	10.1	5.41
1.70V/cell	224.1	173.6	143.9	98.8	77.2	60.4	36.5	27.2	22	18	15.6	12.4	10.2	5.51
1.65V/cell	241.8	184.6	152.8	104.2	79.2	62.4	37.5	28.4	22.7	18.5	16	12.6	10.4	5.58
1.60V/cell	262.5	197.4	162.8	110	82.5	64.6	38.8	29.3	23.4	19.1	16.3	12.7	10.5	5.61

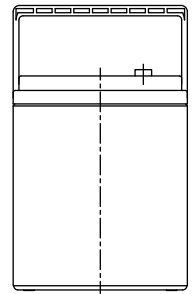
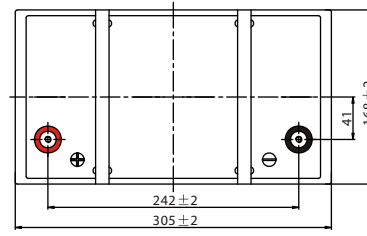
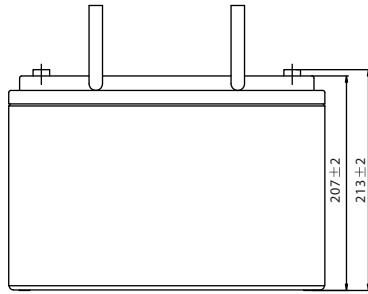
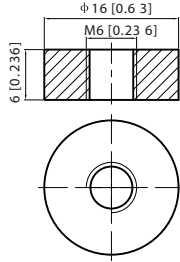
Constant Power Discharge (Watts) at 25°C

F.V/Time	10min	15min	20min	30min	45min	1h	2h	3h	4h	5h	6h	8h	10h	20h
1.85V/cell	273.2	232.3	205.2	148.8	119	96.9	60.4	47.2	38.4	31.3	27.4	22.4	18.7	10.6
1.80V/cell	344.4	276.5	238.8	173.5	137.3	107.9	65.6	50.6	40.8	33.5	29.3	23.7	19.8	10.7
1.75V/cell	373.8	299.1	254.8	179.3	141.8	112.5	67.8	51.4	41.6	34.3	30.1	24.1	20	10.8
1.70V/cell	401.7	316.9	266.3	185.8	147	115.7	70.3	52.7	42.6	35.1	30.7	24.5	20.2	11
1.65V/cell	430.4	334.8	281.5	195.2	150.2	119.2	72.1	54.8	44	36	31.3	24.8	20.6	11.1
1.60V/cell	459.4	353.8	296.8	204	155.1	122.5	74.1	56.2	45.1	37	31.9	25	20.8	11.2

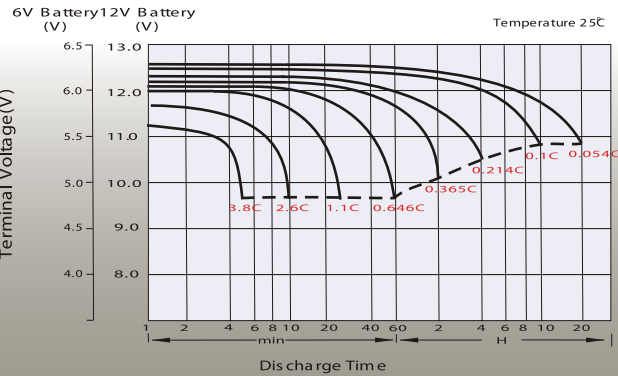
Dimensions

T6 Terminal

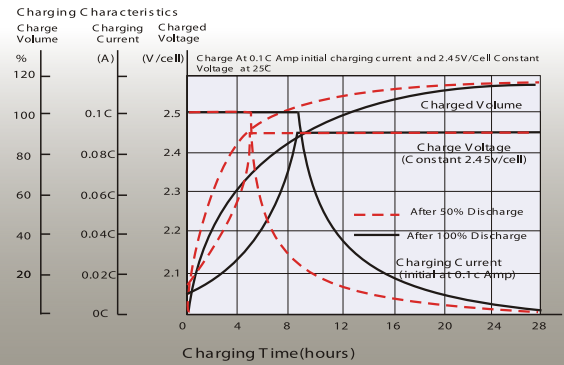
Unit: mm [inches]



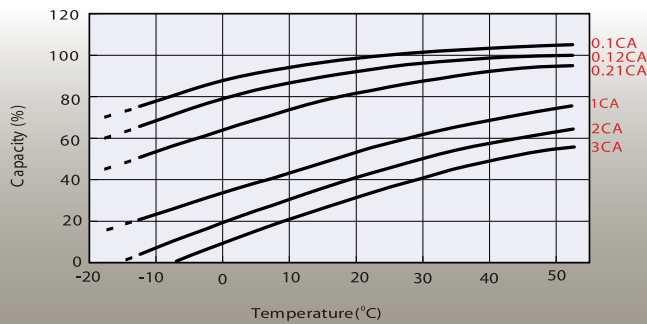
Discharge Characteristics



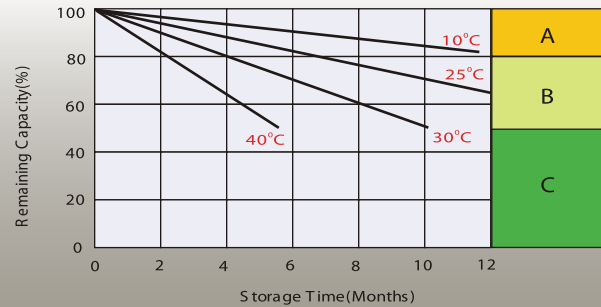
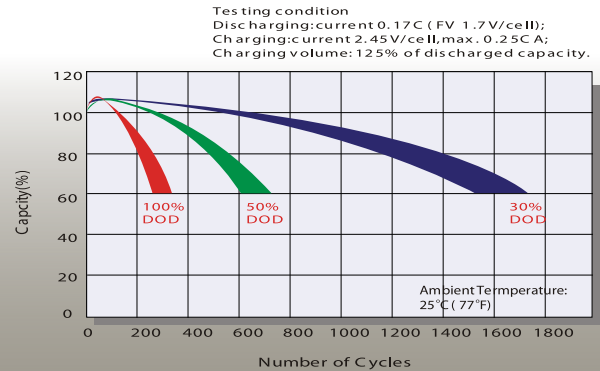
Charging Characteristics (cycle use)



Temperature Effects in Relation to Battery Capacity



Cycle Life in Relation to Depth of Discharge



Self Discharge Characteristics

- A** No supplementary charge required
(Carry out supplementary charge before use if 100% capacity is required.)
- B** Supplementary charge required before use. Optional charging way as below:
 1. Charged for above 3 days at limited current 0.25C/A and constant voltage 2.25V/cell.
 2. Charged for above 20 hours at limited current 0.25C/A and constant voltage 2.45V/cell.
 3. Charged for 8~10 hours at limited current 0.05C/A.
- C** Supplementary charge may often fail to recover the capacity.
The battery should never be left standing till this is reached.

Head Office

SUPER START
BATTERIES

Unit 30
76 Hume Highway
LANSDALE NSW 2166
Tel: (02) 9755 7851 Fax: (02) 9755 7852