

Specifications

Nominal Voltage (V)	12 Volts	
Cold Cranking Amps (CCA)	620 CCA	
Reserve Capacity (Min)	200 Minutes	
Nominal Capacity (20Hr)	85.0 Ah	
Dimensions	Length	260 ± 2mm
	Width	168 ± 2mm
	Container Height	208 ± 2mm
	Total Height (with Terminal)	214 ± 2mm
Approx Weight	Approx 23.2 Kg	
Terminal Type/Torque	T6 @ 5.4N.m	
Container Material	ABS Fire Retardant	
Rated Capacity	85.0 Ah/-A	(20hr, 1.80V/cell, 25°C)
	75.0 Ah/-A	(10hr, 1.80V/cell, 25°C)
	65.8 Ah/-A	(5hr, 1.75V/cell, 25°C)
	59.6 Ah/-A	(3hr, 1.75V/cell, 25°C)
	48.5 Ah/-A	(1hr, 1.60V/cell, 25°C)
Max. Discharge Current (5s)	900A	
Internal Resistance	Approx 6.6m Ohm	
Operating Temp. Range	Discharge	-15 ~ 50°C
	Charge	0 ~ 40°C
	Storage	-15 ~ 40°C
Nominal Operating Temp. Range	25°C ± 3°C	
Cycle Use	Initial Charging Current less than 36.0 A	
	Voltage 14.4V~15.0V at 25°C	
	Temp. Coefficient - 30mV/°C	
Standby Use	No limit on Initial Charging Current	
	Voltage 13.5V~13.8V at 25°C	
	Temp. Coefficient - 20mV/°C	
Capacity affected by Temperature	40°C	103%
	25°C	100%
	0°C	86%
Warranty	3 Years	
Design Life	5 - 7 Years	



Applications

- Marine
- Caravans & Motorhomes
- Trucks & Earth Moving Equipment
- Portable Apparatus
- Lights & Instruments
- Illumination Lights
- Fire Alarms
- Portable Power
- Medical Equipment

VdS	Intertek ETL SEMKO	ISO 9001
ISO14001	ISO9001	CE EMC tested

Self Discharge

SSB DryCell series batteries may be stored for up to 6 months at 25°C and then a freshening charge is required. For higher temperatures the time interval will be shorter.

Constant Current Discharge (Amperes) at 25°C

F.V/Time	10min	15min	20min	30min	45min	1h	2h	3h	4h	5h	6h	8h	10h	20h
1.85V/cell	109.8	92.4	80.7	58.1	46.1	37.4	23.3	18.1	14.7	11.9	10.4	8.50	7.08	3.98
1.80V/cell	140.3	111.6	95.4	68.6	53.7	41.9	25.4	19.5	15.7	12.8	11.2	9.05	7.50	4.00
1.75V/cell	154.2	121.9	102.7	71.2	55.7	43.9	26.3	19.9	16.0	13.2	11.5	9.17	7.58	4.06
1.70V/cell	168.0	130.2	107.9	74.1	57.9	45.3	27.4	20.4	16.5	13.5	11.7	9.30	7.65	4.13
1.65V/cell	181.4	138.4	114.6	78.1	59.4	46.8	28.1	21.3	17.0	13.9	12.0	9.45	7.81	4.19
1.60V/cell	196.9	148.1	122.1	82.5	61.9	48.5	29.1	22.0	17.6	14.3	12.2	9.54	7.89	4.21

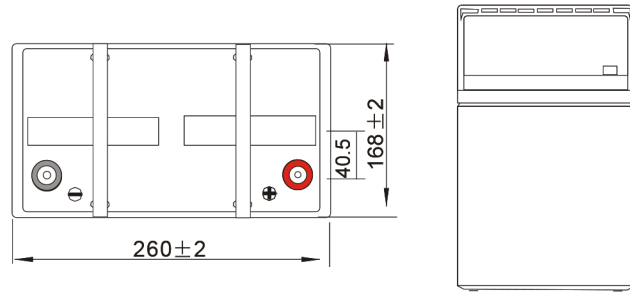
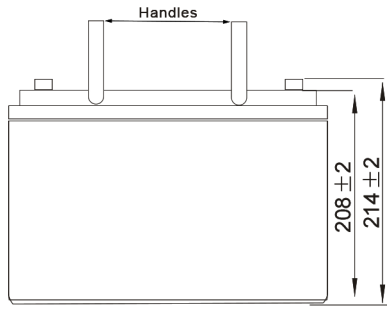
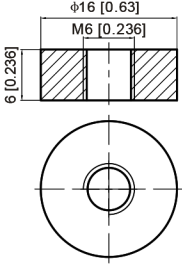
Constant Power Discharge (Watts) at 25°C

F.V/Time	10min	15min	20min	30min	45min	1h	2h	3h	4h	5h	6h	8h	10h	20h
1.85V/cell	204.9	174.2	153.9	111.6	89.3	72.7	45.3	35.4	28.8	23.4	20.6	16.8	14.0	7.79
1.80V/cell	258.3	207.3	179.1	130.1	103.0	80.9	49.2	37.9	30.6	25.1	22.0	17.8	14.8	7.99
1.75V/cell	280.3	224.3	191.1	134.4	106.3	84.4	50.9	38.5	31.2	25.7	22.6	18.1	15.0	8.10
1.70V/cell	301.3	237.7	199.4	139.4	110.3	86.8	52.7	39.5	31.9	26.3	23.0	18.3	15.1	8.24
1.65V/cell	322.8	251.1	211.1	146.4	112.6	89.4	54.4	41.1	33.0	27.0	23.5	18.6	15.4	8.34
1.60V/cell	344.5	265.4	222.6	153.0	116.3	91.8	55.5	42.1	33.9	27.9	23.9	18.8	15.6	8.37

Dimensions

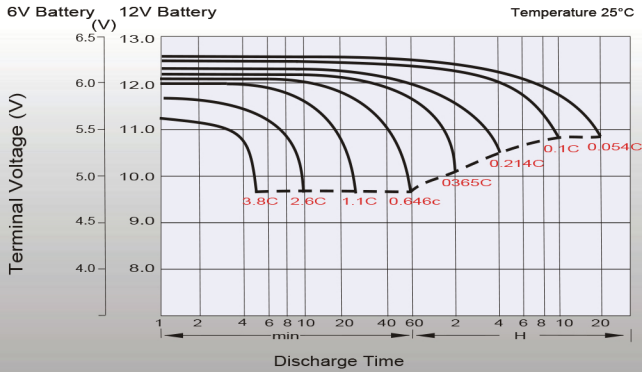
T6 Terminal

Unit: mm [inches]



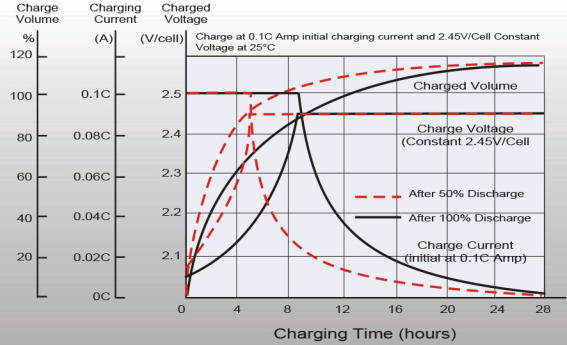
Performance Curves

Discharge Characteristics

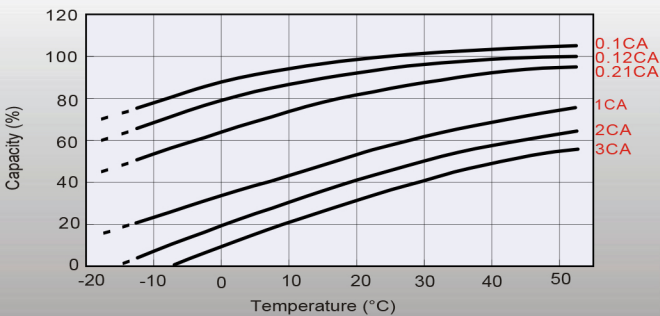


Charging Characteristics (Cycle Use)

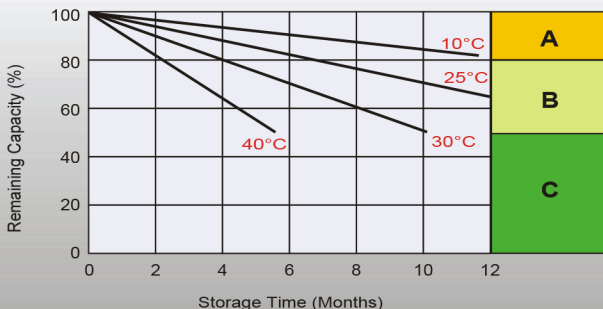
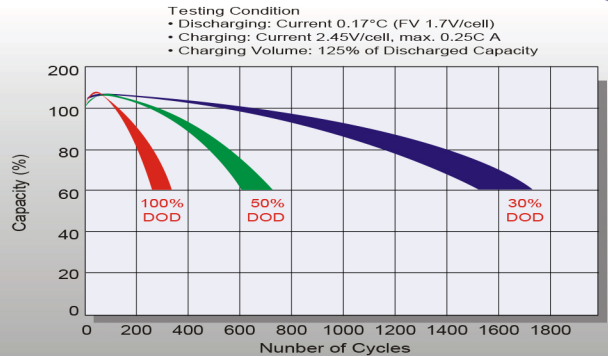
Charging Characteristics



Temperature Effects in Relation to Battery Capacity



Cycle Life in Relation to Depth of Discharge



Self Discharge Characteristics

A No supplementary charge required
(Carry out supplementary charge before use if 100% capacity is required.)

Supplementary charge required before use. Optional charging shown below:

- B**
- Charged for over 3 days at limited current 0.25CA and constant voltage 2.25V/cell.
 - Charged for over 20 hours at limited current 0.25CA and constant voltage 2.45V/cell.
 - Charged for 8-10 hours at limited current 0.05CA.

C Supplementary charge may often fail to recover the capacity.
The battery should never be left standing till this is reached.

Head Office