

imin

Swan 3

DESKTOP

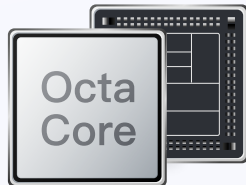


Managed by  KiwiCloud

Performance

Octa Core

Dual-core A76 2.0GHz
Hexa-core A55 1.8GHz



Bluetooth 5.4

Seamless pairing with
modern peripherals



Wi-Fi 6

High-speed data transmission
with less congestion



Android 15

Smoother, modern user
experiences



CORE HARDWARE HIGHLIGHTS

Display



Registers inputs even through gloves or wet hands



10-point capacitive touch G+G touch panel



Optimized 170° viewing angle for dynamic checkout spaces.



Built for clear visibility in the storefront with 350 nits brightness



Dual display with Customer Facing Display

*The NFC module is built into the dual display architecture. Any orders for single display setups will not come with NFC, and cannot support NFC by adding a secondary display in the future.



- 1 Adjustable hinge (180° front-to-back)
- 2 Pogo pin attachment, no screws needed
- 3 Swipe hatch to secure

Customer Facing Display



10.1" Display



10.1" Display (Payment Version)

Compatible with Ingenico Moby 5500/5500M payment module.

*Only available in US, payment module not included

Kensington Lock

No grab-and-go theft cases or accidental shifts to disrupt your countertop aesthetic.

Power Status LED

- Indicates the device is powered on
- Customizable to suit merchant branding



HDMI

Seamless integration with external customer-facing displays and other commercial displays.



HDMI[®]
HIGH-DEFINITION MULTIMEDIA INTERFACE

Microphone

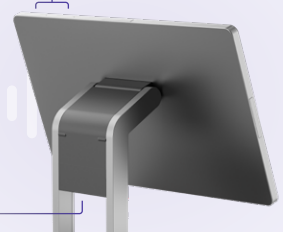
Dual digital mics (2*MEMS) to capture voices clearly at the counter to facilitate voice prompts/command.

Speaker

Robust 8 Ω, 3W speaker that delivers crisp alerts and voice cues – perfect for clear audio guidance.

Microphone

Speaker



Compatible with a full range of accessories.

Camera

Fast, reliable facial recognition for staff and customers without disrupting your flow of work

- Rotatable monocular camera (180° front-to-back)
- Field of View: 89° ± 5°



Magnetic Stripe Reader

- Standard: ISO 7810 / ISO 7811 / ANSI
- Swipe Speed: 10-120cm/s
- Durability: ≥ 500,000 swipes
- Swipe Direction: Bi-directional



Payment Module Holder

Enables EMV payment methods.

Tap, swipe, insert – unlock every major way customers like to pay.

Compatible with Ingenico Moby 5500/5500M payment module.

*Only available in US, payment module not included



Payment Module Box

Enables EMV payment methods.

Compatible with Ingenico Moby 5500/5500M, ID Tech VP3350, and Stripe M2 payment modules.

*The payment box holder for each unique brand is different and not interchangeable.



Digital Display

Bringing clarity to the checkout experience

Supports up to 8 digits, 2 decimal places



Peripherals

USB 2.0 Type-A x 3, USB 3.0 Type-A x 1, USB 2.0 Type-C x 1, 3.5mm Headphone Jack x 1, DC Jack x 1, Kensington Lock x 1, TF Card (up to 1TB) x 1, 6 pin Pogopin x 3, HDMI 2.0 x 1

RJ 11 (Scale)

RJ 12 (Cash Drawer)

RJ 45 (Ethernet 10M, 100M, 1000M)



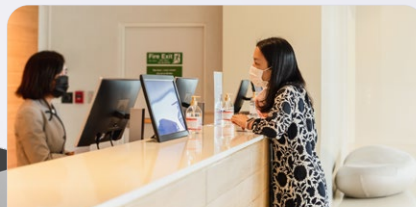
Industry Spotlight



F&B



Retail



Public Service



Entertainment

Transcending Traditional Kiosks Through Intelligence.

OCR Translation

Two-way translations into target language.



Simultaneous Interpretation

Real-time speech translation and voice broadcast.



*Disclaimer: For more information on our AI features, please request for our brochure from your regional sales representative.

Specification

Processor	Octa-core (Dual-core A76 2.0GHz, Hexa-core A55 1.8GHz) NPU 3 TOPS	Memory	4GB RAM + 64GB ROM 8GB RAM + 128GB ROM
Display	15.6", Full HD IPS, 1920 x 1080 Multi-point Capacitive Touch Panel Brightness: 350 nits Viewing Angle: (Typ.) $\pm 85^\circ$ (H) / $\pm 85^\circ$ (V) 45% NTSC Colour Gamut	Customer Facing Display	10.1", HD IPS, 1280 x 80, Payment Module (Optional) Multi-point Capacitive Touch Panel (Optional) Brightness: 280 nits Viewing Angle: (Typ.) $\pm 85^\circ$ (H) / $\pm 85^\circ$ (V) 57% NTSC Colour Gamut
Connectivity	Wireless: Wi-Fi 6, 802.11 a/b/g/n/ac/ax (2.4GHz/5GHz) Ethernet: 1000M, Bluetooth 5.4, Secondary Display NFC (Optional)	Operating System	Android 15, 64bit
NFC	The NFC module is built into the dual display architecture. Any orders for single display setups will not come with NFC, and cannot support NFC by adding a secondary display in the future.	Button	Power key
Speaker	3W x 1	Power Adapter	Input: 100 ~ 240V; Output: 24V / 2.5A
Peripheral Ports	USB 2.0 Type-A x 3, USB 3.0 Type-A x 1, USB 2.0 Type-C x 1, 3.5mm Headphone Jack x 1, DC Jack x 1, Kensington Lock x 1, TF Card (up to 1TB) x 1, RJ11 x 1, RJ12 x 1, RJ45 x 1, 6 pin Pogopin x 3, HDMI 2.0 x 1	Environment	Operating temperature: 0 ~ 50°C Storage temperature: -20 ~ 60°C
Dimensions	Single Display: 370 x 181 x 306mm Dual Display: 370 x 212 x 306mm	Certification*	Google GMS FCC CE IMDA WEEE
Accessory*	Camera, Digital Display, MSR Card Reader, Payment Module		

* The product pictures and display contents in the above pages are for illustration purposes only. The actual product effects (including but not limited to appearance, color, size) and screen display contents (including but not limited to background UI pictures) might differ.

The performance results are obtained from iMin's internal laboratory and extracted from specific test environments. In actual use, there might be a difference in performance due to individual differences in product, software, use conditions and environmental factors.

iMin does not provide the facial recognition algorithm. It requires integration with the user's software applications or third-party algorithms.

The accessories of the Swan 3 are sold separately according to user needs. To view more product certificate information, please visit www.imin.sg/en/resources.