



PART NUMBER BKS-240KUN

Thank you for purchasing the Black Series Alternator, this alternator is a high amperage performance type unit, suited for vehicles that have a need for higher amperage at lower RPM. This alternator is a direct fit to the application and should not be modified for a universal application.

We recommend to have this fitted by a Trade Qualified Auto Electrician to avoid damage to the vehicles wiring harness.

It is recommended to keep the vehicles battery on charge if not driven weekly.

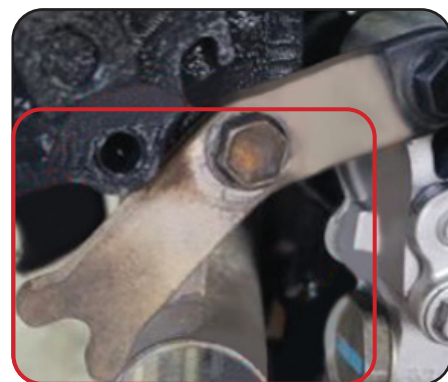
High amperage units have the potential to damage batteries in a low state of charge.

Due to the amount of current this alternator can produce, the Main B+ wire from the alternator to the battery needs to be rated no less than 250A @ 14V DC.

SPEED CURRENT TABLE (HOT)				TEST VOLTAGE 13.5V						
SPEED ALT RPM	1187	1801	2200	2501	3200	4001	4500	4997	5500	6997
CURRENT	0	117	155	174	190	206	209	213	215	216

To fit this unit to the Toyota Prado you may require a longer belt as the body of the alternator is larger. 7PK1580 is suggested.

The Toyota HiLux application will require the adjustment bracket flipped over as per the photo to allow for an easier fit.



This Black Series unit is not to be used with Lithium batteries unless they are used in conjunction with a DC to DC Charger.

If you have any questions regarding this product please contact the place of purchase.