



# STRAIGHT SLIDES / SIDE STRAIGHT SLIDES

## INSTALLATION INSTRUCTIONS



# CONTENTS

- 3** CONGRATULATIONS
- 4** WHAT'S IN THE BOX
- 5** IMPORTANT INFORMATION
- 6** SLIDE INSTALLATION
- 7** FRIDGE INSTALLATION
- 8** FRIDGE CORDS, TIE DOWN BRACKETS & STRAPS INSTALLATION
- 9** POWER CORDS
- 10** MAINTENANCE
- 11** LIFETIME GUARANTEE





# CONGRATULATIONS ON YOUR PURCHASE OF A QUALITY MSA 4X4 DRAWER SYSTEM!

**Years of design, development and manufacturing knowledge goes into every  
MSA 4X4 product to ensure that our products are the very best they can be!**

Established in 2000, MSA 4X4 Accessories are the 4WD market leaders in quality Canvas products which include Certified ADR Compliant Canvas Seat Covers, Rear Wheel Bags, Rear Wheel Rubbish Bins, Vehicle Organisers and more.

We pride ourselves on our innovative products which include the world first, revolutionary Fridge Dropslide, the new patent pending Explorer Aluminium Storage Drawer System which delivers a whole new level of access to the drawer contents, the original Water Bra, fully adjustable air lumbar support systems, and an extensive range of 4x4 accessories that have stood the test of time.

As testament to our innovative culture, we have been awarded 19 patents in Australia & Internationally across our range of products including innovations currently within the patent process. We are a growing team with a vast knowledge of what works and what doesn't work out in the real world and constantly strive to deliver the highest quality product to our customers. We treat every product design with fear of failure in mind, ensuring our products are always the very best they can be. All our products are designed to be as simple as possible to use and are supported by our MSA 4X4 Lifetime Guarantee.

**Our products are available through a network of over  
600 stockists Australia wide.**



# GETTING STARTED

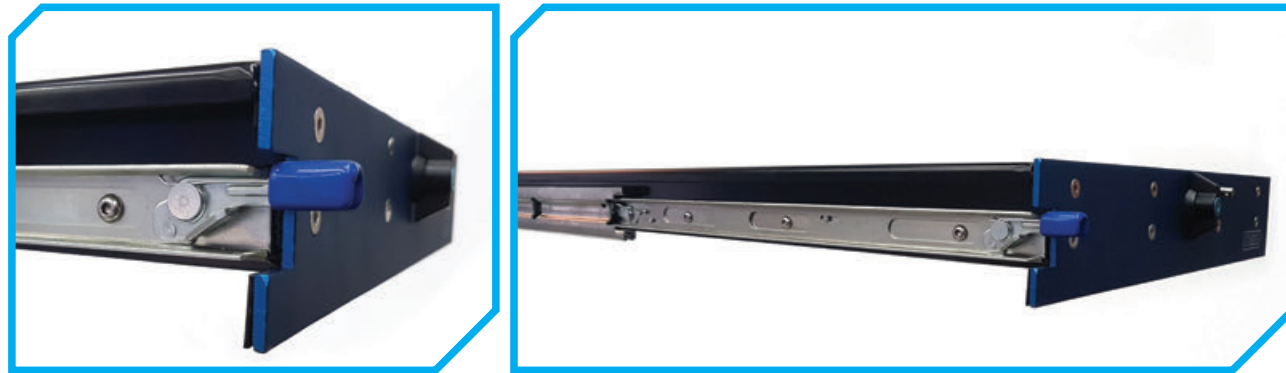
Here's what comes in the box:

4

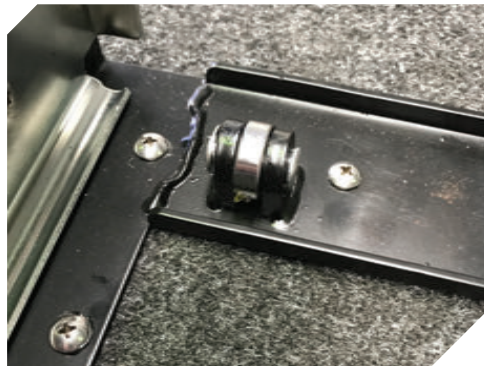
- 1 Slide Unit
- 2 Installation Kit



**NOTE:** Our range of Fridge & Accessory Slides incorporate a “Locking Slide Runner” feature. This feature keeps the unit from opening unless the Lock Release Button is pressed even if the main key lock on the front is unlocked and open. As well as a “Lock In” feature, it also acts as a “Lock Out” feature which stops the fridge tray from rolling back in unexpectedly.



- 1.** Place the slide in the position required. Unlock the key lock and open the slide 150mm to expose the rear row of holes in the base frame. Now install a 10 gauge x 20mm long self-tap screw in each hole across the rear (**FIG 1 & 1a**). As an alternative to the self-tapping screws, the mounted surface can be drilled and M6 nuts and bolts can be used. Please ensure the nuts are Nyloc nuts.
- 2.** The slide can now be extended out a little further to expose more mounting holes on each side. Install self-tap screws in these holes. Continue working towards the front of the slide until all the holes have screws or bolts installed. The slide is now installed. Do not operate or place any weight on the slide until all the fixings have been installed.



**FIG 1**

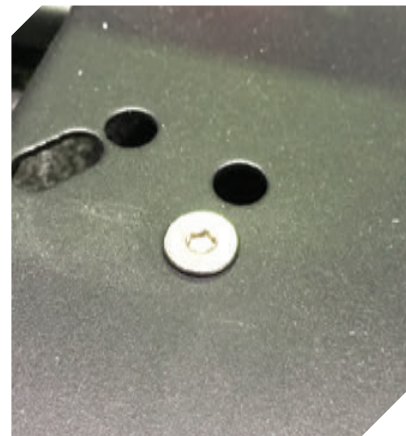


**FIG 1a**

1. Place the fridge, generator or tool box in the desired location on the fridge tray. If the slide is fitted inside a canopy or closing door, please ensure there is enough clearance to allow the door to close completely without contact to the slide lock.
2. There are locating holes in most slide trays to suit most fridges with feet or threads in the base of the fridge.
3. For ARB and Engel fridges, remove the four feet from the fridge and place the feet over the location holes in the tray. Now place the fridge on the feet, a small Phillips head screwdriver can be pushed through the tray to locate the threads in the base of the fridge through the feet. Install the 4 x M6 bolts & washers supplied and tighten. **(FIG 2)**
4. For Waeco CFX fridges, place the fridge on the tray, align the holes with a small screwdriver and install the M6 bolts and washers supplied in the kit to all 4 threads in the fridge base and tighten.
5. For Waeco CF fridges, install the 6mm countersunk head bolts through the top of the tray with the head up. This works as a locator only. **(FIG 3)**



**FIG 2**



**FIG 3**

1. There are 4 x blue anodised aluminium tie down brackets supplied in the kit - two for the front tie downs and two for the rear tie downs. These are to be installed with the M8 stainless steel countersunk head bolts and Nyloc nuts and washers.
2. Place the brackets against the fridge, generator or tool box so that they rest on the poly bumper.
3. Install the M8 stainless steel countersunk bolts through the slide tray elongated holes and install the M8 washers and nyloc nuts on the underside of the tray and tighten. **(FIG 4)**
4. There are 4 smaller tie down brackets supplied in the kit. These can be used in place of the handle to be used as tie down points if required. These can be used in place of the rear handle where the slide may be tight against a cargo barrier and used for extra clearance. **(FIG 5)**
5. Install the 4 x tie down straps and trim or cable tie the excess strap neatly out of the way. **(FIG 6)**

**Note: Do not use turn buckles to tie down fridges. 25mm cam buckle tie down straps are recommended.**



**FIG 4**



**FIG 5**



**FIG 6**



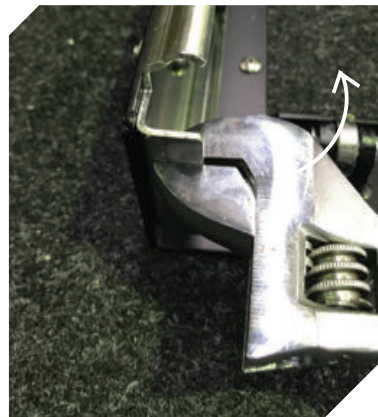


**Ensure power cords are cable tied out of way of all mechanisms. Cable ties are supplied in the Straight Slide/Side Straight Slide kits. On fridges with rear power plugs, run the power cables up the back of the fridge and cable tie the cord to the fridge handle. For most fridges, simply run the power cables where they will not interfere with the operation of the Slide or become caught and damaged in moving parts.**

- Please ensure slide runners, tray and bearings remain free from dirt, sand, grit & water.
- Clean all exposed metal parts regularly & spray with Innox Plus MX5
- Please check the Slide tray does not have any forward or backward movement. This can cause failure of the lock key assembly

To check and adjust, make sure the Slide is in the stowed and locked position. Holding the front of the Fridge tray, pull the tray forwards and backwards. If there is any movement or “clicking”, then unlock the fridge tray and slide forward enough to gain access to the rear of the slide runners.

Looking at the back end of each of the slide runners you will notice a small black moulded rubber bumper that, when the runner is closed, sits up against a metal tab bent at a right angle. Using a shifting spanner, slightly bend this tab forward. You must also do the same adjustment to the other runner as well, this will remove any unnecessary extra clearance in the slide runners. **(FIG 7 & 7a)**



**FIG 7**



**FIG 7a**



**Address:**

43 Harrington Street,  
Arundel QLD, 4214

ABN: 50 150 429 566

**Phone:**

+61 7 5594 6664

**Email:**

warranties@msa4x4.com.au

**Website:**

msa4x4.com.au

All MSA 4X4 Accessories products are designed and manufactured to the highest quality standards to perform as they should. We stand behind our products with a Lifetime Manufacturer's Warranty. All claims under this warranty should be made by returning the product at your cost to MSA 4X4 Accessories Pty Ltd, 43 Harrington Street, Arundel, QLD 4214, with the detail of the fault, proof of purchase, proof of identification and vehicle fitment details where relevant. Lifetime manufacturer's warranty applies to the original purchaser only.


If we determine that an MSA 4X4 Accessories product is defective in materials or workmanship during the Lifetime Warranty, we will either repair or replace the product. Repair or replacement is solely at the discretion of MSA 4X4 Accessories Pty Ltd. This warranty does not apply to failure or damage caused by incorrect or faulty fitment, accidental or intentional damage, misuse or abuse, failure of other products, operation of the product outside of its environmental or technical specifications, or repair or modification carried out by anyone other than MSA 4X4 Accessories Pty Ltd. No charges will be accepted for external labour or materials.


Lifetime warranty is applicable to all MSA 4X4 Accessories Fridge Slides, Fridge Barriers, Storage Drawers, and steel or aluminium products, excluding MSA 4X4's Driving Mirrors & Power Panels. MSA 4X4 Accessories Lifetime warranty does not cover any coating faults, rust, scratches, chips, carpet or battery packs. Fabric product Lifetime Warranty covers all manufacture and fabric components. Lifetime Warranty will not cover any fading of fabrics.

MSA 4X4 Accessories products are designed for lifestyle applications. Due to the harshness of the mining environment, MSA 4X4 Accessories products used in mining applications that may be operating outside of their environmental and technical specifications, are therefore excluded from a Lifetime Warranty. MSA 4X4 Accessories products used in mining applications are warranted for up to 1 year.

Our goods come with guarantees that cannot be excluded under the Australian Consumer Law. You are entitled to a replacement or refund for a major failure and for compensation for any other reasonably foreseeable loss or damage. You are also entitled to have the goods repaired or replaced if the goods fail to be of acceptable quality and the failure does not amount to a major failure.



 07 5594 6664

 07 5594 6667

 sales@msa4x4.com.au

 msa4x4.com.au

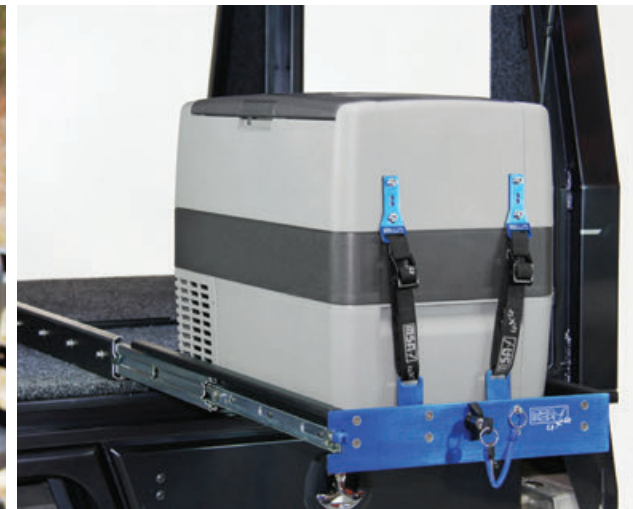
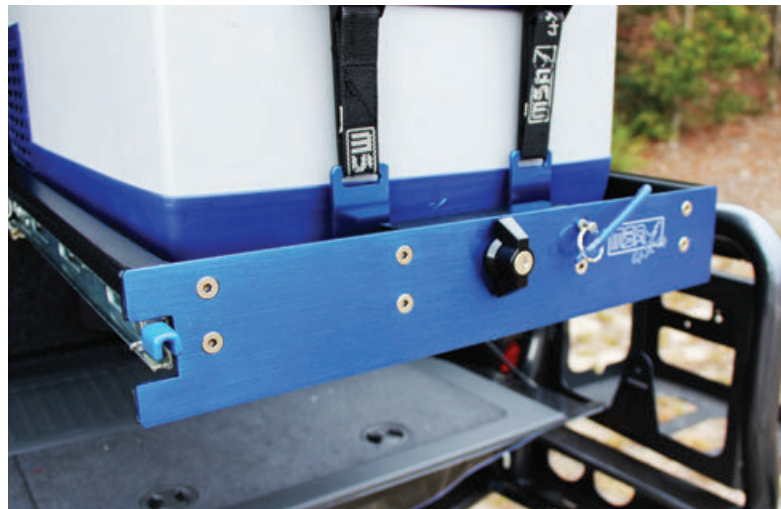
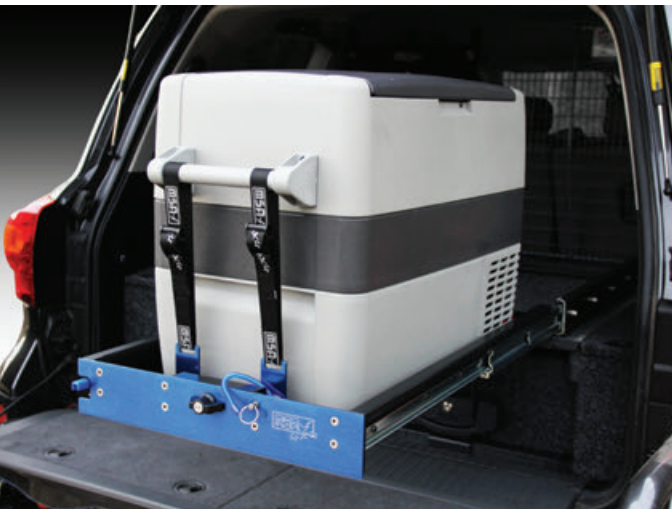
### **DISCLAIMER**

MSA 4X4 Accessories Pty Ltd is not liable to the buyer in contract or in tort arising out of, or in connection with, or relating to; (a) the performance of this product or any breach of these conditions; or (b) any fact, matter of thing relating to this product; or any error (whether negligent or in breach of contract or not) in information supplied to the buyer or a user before or after the date of the purchaser's or user's use of this product.

### **MSA 4X4 Accessories Pty Ltd**

43 Harrington Street  
Arundel, QLD 4214

ABN: 50 150 429 566



**MSA4X4.COM.AU | GEAR FOR LIFE**